



LRFN3 rabbit pAb

Catalog No	BYab-08556
Isotype	IgG
Reactivity	Human; Mouse;Rat
Applications	WB
Gene Name	LRFN3 SALM4 UNQ5865/PRO34192
Protein Name	LRFN3
Immunogen	Synthesized peptide derived from human LRFN3 AA range: 8-58
Specificity	This antibody detects endogenous levels of LRFN3 at Human/Mouse/Rat
Formulation	Liquid in PBS containing 50% glycerol, 0.5% BSA and 0.02% sodium azide.
Source	Polyclonal, Rabbit,IgG
Purification	The antibody was affinity-purified from rabbit serum by affinity-chromatography using specific immunogen.
Dilution	WB 1: 500-2000
Concentration	1 mg/ml
Purity	≥90%
Storage Stability	-20°C/1 year
Synonyms	
Observed Band	
Cell Pathway	Cell membrane ; Single-pass type I membrane protein . Cell projection, axon . Cell projection, dendrite . Cell junction, synapse . Cell junction, synapse, presynaptic cell membrane . Cell junction, synapse, postsynaptic cell membrane .
Tissue Specificity	
Function	similarity:Belongs to the LRFN family.,similarity:Contains 1 fibronectin type-III domain.,similarity:Contains 1 Ig-like (immunoglobulin-like) domain.,similarity:Contains 6 LRR (leucine-rich) repeats.,
Background	
matters needing attention	Avoid repeated freezing and thawing!

Nanjing BYabscience technology Co.,Ltd

网址: www.njbybio.com

官方热线: 025-5229-8998

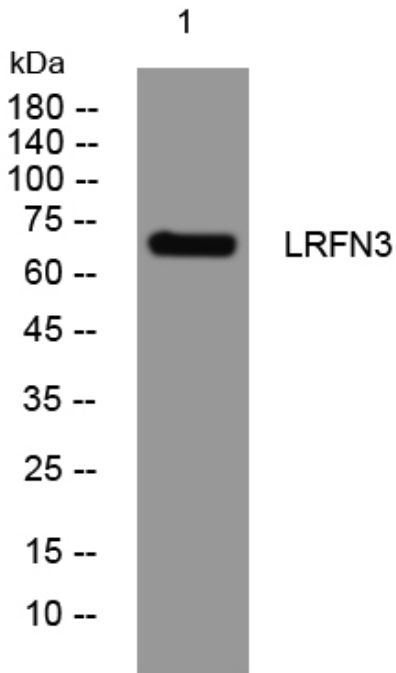
监督电话: 15950492658



Usage suggestions

This product can be used in immunological reaction related experiments. For more information, please consult technical personnel.

Products Images



Western blot analysis of lysates from VEC cells,
primary antibody was diluted at 1:1000, 4° over night