



DUX4 rabbit pAb

Catalog No	BYab-08515
Isotype	IgG
Reactivity	Human;Rat;Mouse;
Applications	WB
Gene Name	DUX4 DUX10
Protein Name	DUX4
Immunogen	Synthesized peptide derived from human DUX4 AA range: 235-285
Specificity	This antibody detects endogenous levels of DUX4 at Human
Formulation	Liquid in PBS containing 50% glycerol, 0.5% BSA and 0.02% sodium azide.
Source	Polyclonal, Rabbit,IgG
Purification	The antibody was affinity-purified from rabbit serum by affinity-chromatography using specific immunogen.
Dilution	WB 1: 500-2000
Concentration	1 mg/ml
Purity	≥90%
Storage Stability	-20°C/1 year
Synonyms	
Observed Band	
Cell Pathway	[Isoform 1]: Nucleus . Actively transported through the nuclear pore complex (NPC). .; [Isoform 2]: Nucleus .
Tissue Specificity	Isoform 1: Does not seem to be expressed in normal muscle, but is detected in muscle of individuals with FSHD, and also in testis (at protein level) (PubMed:21060811, PubMed:17984056). Isoform 1: Does not seem to be expressed in normal muscle, but in muscle of individuals with FSHD, where it may be toxic to cells (PubMed:21060811, PubMed:17984056). Isoform 2: Detected in skeletal muscle, fibroblasts and testis from healthy individuals (PubMed:21060811).
Function	
Background	This gene is located within a D4Z4 repeat array in the subtelomeric region of chromosome 4q. The D4Z4 repeat is polymorphic in length; a similar D4Z4 repeat array has been identified on chromosome 10. Each D4Z4 repeat unit has an open reading frame (named DUX4) that encodes two homeoboxes; the repeat-array

Nanjing BYabscience technology Co.,Ltd



and ORF is conserved in other mammals. The encoded protein has been reported to function as a transcriptional activator of paired-like homeodomain transcription factor 1 (PITX1; GeneID 5307). Contraction of the macrosatellite repeat causes autosomal dominant facioscapulohumeral muscular dystrophy (FSHD). Alternative splicing results in multiple transcript variants. [provided by RefSeq, Apr 2015],

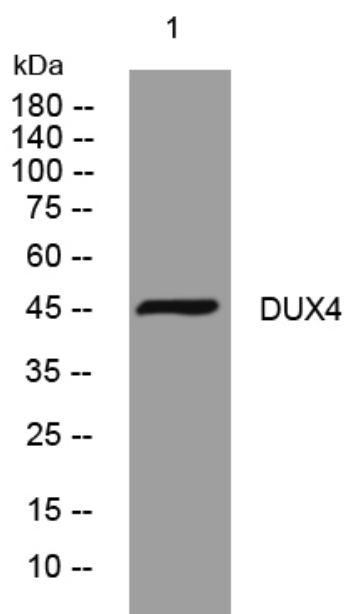
matters needing attention

Avoid repeated freezing and thawing!

Usage suggestions

This product can be used in immunological reaction related experiments. For more information, please consult technical personnel.

Products Images



Western blot analysis of lysates from HeLa cells, primary antibody was diluted at 1:1000, 4° over night