



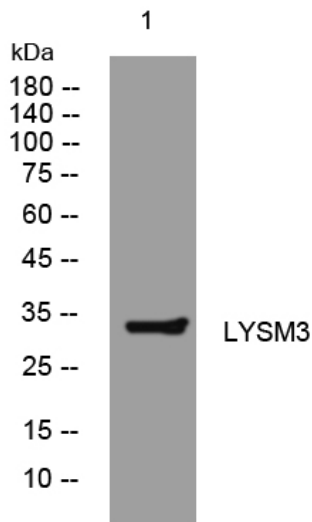
LYSM3 rabbit pAb

Catalog No	BYab-08475
Isotype	IgG
Reactivity	Human; Mouse;Rat
Applications	WB
Gene Name	LYSMD3
Protein Name	LYSM3
Immunogen	Synthesized peptide derived from human LYSM3 AA range: 161-211
Specificity	This antibody detects endogenous levels of LYSM3 at Human/Mouse/Rat
Formulation	Liquid in PBS containing 50% glycerol, 0.5% BSA and 0.02% sodium azide.
Source	Polyclonal, Rabbit,IgG
Purification	The antibody was affinity-purified from rabbit serum by affinity-chromatography using specific immunogen.
Dilution	WB 1: 500-2000
Concentration	1 mg/ml
Purity	≥90%
Storage Stability	-20°C/1 year
Synonyms	
Observed Band	
Cell Pathway	Cell membrane ; Single-pass membrane protein . Golgi apparatus .
Tissue Specificity	
Function	similarity:Contains 1 LysM repeat.,
Background	
matters needing attention	Avoid repeated freezing and thawing!
Usage suggestions	This product can be used in immunological reaction related experiments. For more information, please consult technical personnel.

Nanjing BYabscience technology Co.,Ltd



Products Images



Western blot analysis of lysates from MCF-7 cells,
primary antibody was diluted at 1:1000, 4° over night