



PBIP1 rabbit pAb

Catalog No	BYab-08396
Isotype	IgG
Reactivity	Human; Mouse;Rat
Applications	WB
Gene Name	PBXIP1 HPIP
Protein Name	PBIP1
Immunogen	Synthesized peptide derived from human PBIP1 AA range: 585-635
Specificity	This antibody detects endogenous levels of PBIP1 at Human/Mouse/Rat
Formulation	Liquid in PBS containing 50% glycerol, 0.5% BSA and 0.02% sodium azide.
Source	Polyclonal, Rabbit,IgG
Purification	The antibody was affinity-purified from rabbit serum by affinity-chromatography using specific immunogen.
Dilution	WB 1: 500-2000
Concentration	1 mg/ml
Purity	≥90%
Storage Stability	-20°C/1 year
Synonyms	
Observed Band	
Cell Pathway	Cytoplasm, cytoskeleton . Nucleus . Shuttles between the nucleus and the cytosol (PubMed:12360403). Mainly localized in the cytoplasm, associated with microtubules (PubMed:10825160, PubMed:12360403). Detected in small amounts in the nucleus (PubMed:10825160).
Tissue Specificity	Expressed in early hematopoietic precursors.
Function	domain:Association to the cytoskeleton through a N-terminal leucine rich-domain (AA 190-218).,domain:The C-terminal domain (AA 443-731) contains a nuclear export signal.,function:Regulator of pre-B-cell leukemia transcription factors (BPXs) function. Inhibits the binding of PBX1-HOX complex to DNA and blocks the transcriptional activity of E2A-PBX1. Tethers estrogen receptor-alpha (ESR1) to microtubules and allows them to influence estrogen receptors-alpha signaling.,subcellular location:Shuttles between the nucleus and the cytosol. Mainly localized in the cytoplasm, associated with microtubules. Detected in small amounts in the nucleus.,subunit:Interacts with ESR1, PBX1, PBX2 and PBX3.,tissue specificity:Expressed in early hematopoietic precursors.,

Nanjing BYabscience technology Co.,Ltd



Background

The protein encoded by this gene interacts with the PBX1 homeodomain protein, inhibiting its transcriptional activation potential by preventing its binding to DNA. The encoded protein, which is primarily cytosolic but can shuttle to the nucleus, also can interact with estrogen receptors alpha and beta and promote the proliferation of breast cancer, brain tumors, and lung cancer. Several transcript variants encoding different isoforms have been found for this gene. More variants exist, but their full-length natures have yet to be determined. [provided by RefSeq, Dec 2015],

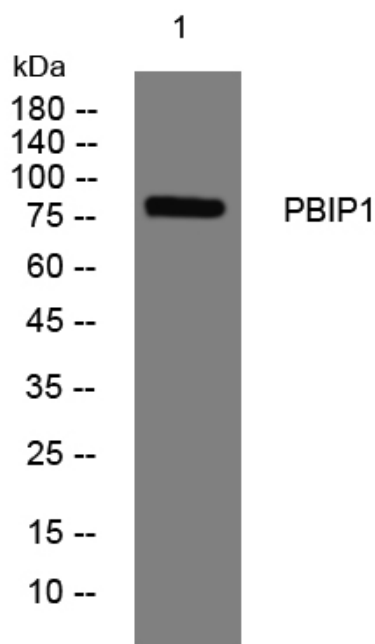
matters needing attention

Avoid repeated freezing and thawing!

Usage suggestions

This product can be used in immunological reaction related experiments. For more information, please consult technical personnel.

Products Images



Western blot analysis of lysates from SW480 cells, primary antibody was diluted at 1:1000, 4° over night