



LFTY2 rabbit pAb

Catalog No	BYab-08354
Isotype	IgG
Reactivity	Human; Mouse
Applications	WB
Gene Name	LEFTY2 EBAF LEFTA LEFTYA TGFB4 PSEC0024
Protein Name	LFTY2
Immunogen	Synthesized peptide derived from human LFTY2 AA range: 205-255
Specificity	This antibody detects endogenous levels of LFTY2 at Human/Mouse
Formulation	Liquid in PBS containing 50% glycerol, 0.5% BSA and 0.02% sodium azide.
Source	Polyclonal, Rabbit,IgG
Purification	The antibody was affinity-purified from rabbit serum by affinity-chromatography using specific immunogen.
Dilution	WB 1: 500-2000
Concentration	1 mg/ml
Purity	≥90%
Storage Stability	-20°C/1 year
Synonyms	
Observed Band	
Cell Pathway	Secreted.
Tissue Specificity	Mesenchymal cells of the endometrial stroma.
Function	developmental stage:Transiently expressed before and during menstrual bleeding.,disease:Defects in LEFTY2 are the cause of left-right axis malformations (L-R axis malformation) [MIM:601877]. The defect includes left pulmonary isomerism, with cardiac anomalies characterized by complete atrioventricular canal defect and hypoplastic left ventricle, and interrupted inferior vena cava.,function:Required for left-right (L-R) asymmetry determination of organ systems in mammals. May play a role in endometrial bleeding.,PTM:The processing of the protein may also occur at the second R-X-X-R site located at AA 132-135. Processing appears to be regulated in a cell-type specific manner.,sequence caution:Authors have revised their sequence, but have not submitted the revised DNA sequence.,similarity:Belongs to the TGF-beta family.,tissue specificity:Mesenchymal cells of the endometrial stroma.,

Nanjing BYabscience technology Co.,Ltd



Background

This gene encodes a secreted ligand of the TGF-beta (transforming growth factor-beta) superfamily of proteins. Ligands of this family bind various TGF-beta receptors leading to recruitment and activation of SMAD family transcription factors that regulate gene expression. The encoded preproprotein is proteolytically processed to generate the mature protein, which plays a role in left-right asymmetry determination of organ systems during development. The protein may also play a role in endometrial bleeding. Mutations in this gene have been associated with left-right axis malformations, particularly in the heart and lungs. Some types of infertility have been associated with dysregulated expression of this gene in the endometrium. This gene is closely linked to both a related family member and a related pseudogene. This gene encodes multiple isoforms that may undergo similar proteolytic processing. [provided by RefSeq, Aug 2016],

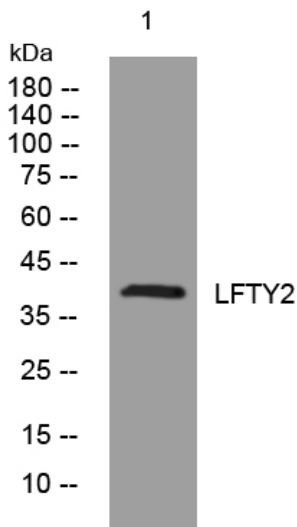
matters needing attention

Avoid repeated freezing and thawing!

Usage suggestions

This product can be used in immunological reaction related experiments. For more information, please consult technical personnel.

Products Images



Western blot analysis of lysates from HpeG2 cells, primary antibody was diluted at 1:1000, 4° over night