



# PRB2 rabbit pAb

Catalog No	BYab-08303
Isotype	IgG
Reactivity	Human;Rat;Mouse;
Applications	WB
Gene Name	PRB2
Protein Name	PRB2
Immunogen	Synthesized peptide derived from human PRB2 AA range: 241-291
Specificity	This antibody detects endogenous levels of PRB2 at Human
Formulation	Liquid in PBS containing 50% glycerol, 0.5% BSA and 0.02% sodium azide.
Source	Polyclonal, Rabbit,IgG
Purification	The antibody was affinity-purified from rabbit serum by affinity-chromatography using specific immunogen.
Dilution	WB 1: 500-2000
Concentration	1 mg/ml
Purity	≥90%
Storage Stability	-20°C/1 year
Synonyms	
Observed Band	
Cell Pathway	Secreted .
Tissue Specificity	
Function	miscellaneous:Peptides IB-9 and P-E are the same peptide.,online information:The Singapore human mutation and polymorphism database,polymorphism:The number of repeats is polymorphic and varies among different alleles.,polymorphism:The number of repeats is polymorphic and varies among different alleles. Allele S (short), allele M (medium) and allele L (long) contain 6, 7 and 9 tandem repeats respectively.,polymorphism:The number of repeats is polymorphic and varies among different alleles. The sequence shown is that of allele L (long). There are allele M (medium) and allele S (short) which contain 12 and 9 approximate tandem repeats repectively.,PTM:Glycosylated.,
Background	This gene encodes a member of the heterogeneous family of basic, proline-rich, human salivary glycoproteins. The encoded preproprotein undergoes proteolytic

Nanjing BYabscience technology Co.,Ltd



processing to generate one or more mature isoforms before secretion from the parotid glands. Multiple alleles of this gene exhibiting variations in the length of the tandem repeats, polymorphic cleavage sites and polymorphic stop codons have been identified. This gene is located in a cluster of closely related salivary proline-rich proteins on chromosome 12. [provided by RefSeq, Oct 2015],

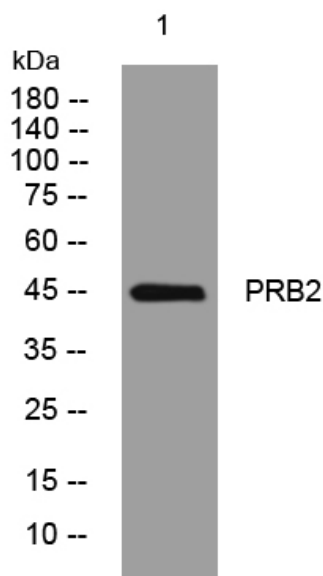
**matters needing attention**

Avoid repeated freezing and thawing!

**Usage suggestions**

This product can be used in immunological reaction related experiments. For more information, please consult technical personnel.

## Products Images



Western blot analysis of lysates from MDA-MB cells, primary antibody was diluted at 1:1000, 4° over night