



# MAMD1 rabbit pAb

<b>Catalog No</b>	BYab-08241
<b>Isotype</b>	IgG
<b>Reactivity</b>	Human; Mouse
<b>Applications</b>	WB
<b>Gene Name</b>	MAMLD1 CG1 CXorf6
<b>Protein Name</b>	MAMD1
<b>Immunogen</b>	Synthesized peptide derived from human MAMD1 AA range: 189-239
<b>Specificity</b>	This antibody detects endogenous levels of MAMD1 at Human/Mouse
<b>Formulation</b>	Liquid in PBS containing 50% glycerol, 0.5% BSA and 0.356% sodium azide.
<b>Source</b>	Polyclonal, Rabbit,IgG
<b>Purification</b>	The antibody was affinity-purified from rabbit serum by affinity-chromatography using specific immunogen.
<b>Dilution</b>	WB 1:500-2000
<b>Concentration</b>	1 mg/ml
<b>Purity</b>	≥90%
<b>Storage Stability</b>	-20°C/1 year
<b>Synonyms</b>	Mastermind-like domain-containing protein 1 (F18) (Protein CG1)
<b>Observed Band</b>	85kD
<b>Cell Pathway</b>	Nucleus . Punctate nuclear localization.
<b>Tissue Specificity</b>	Expressed in fetal brain, fetal ovary and fetal testis. Expressed in adult brain, ovary, skin, testis, uterus. Highly expressed in skeletal muscle.
<b>Function</b>	caution:The sequence shown here is derived from an Ensembl automatic analysis pipeline and should be considered as preliminary data.,disease:Defects in MAMLD1 are a cause of X-linked hypospadias type 2 (HYSP2) [MIM:300758]. Hypospadias is a common malformation in which the urethra opens on the ventral side of the penis. It is considered a complex disorder with both genetic and environmental factors involved in the pathogenesis. Hypospadias can occur alone on an apparently multifactorial basis or as part of syndromes.,similarity:Belongs to the mastermind family.,tissue specificity:Preferentially expressed in skeletal muscle.,
<b>Background</b>	This gene encodes a mastermind-like domain containing protein. This protein may function as a transcriptional co-activator. Mutations in this gene are the cause of

**Nanjing BYabscience technology Co.,Ltd**



X-linked hypospadias type 2. Alternate splicing results in multiple transcript variants. [provided by RefSeq, Apr 2010],

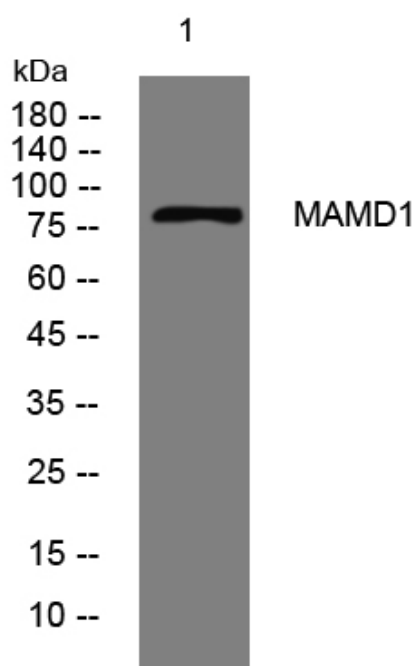
**matters needing attention**

Avoid repeated freezing and thawing!

**Usage suggestions**

This product can be used in immunological reaction related experiments. For more information, please consult technical personnel.

## Products Images



Western blot analysis of lysates from AD293 cells, primary antibody was diluted at 1:1000, 4° over night