



# LAT4 rabbit pAb

<b>Catalog No</b>	BYab-08053
<b>Isotype</b>	IgG
<b>Reactivity</b>	Human; Mouse
<b>Applications</b>	WB
<b>Gene Name</b>	SLC43A2 LAT4 PP7664
<b>Protein Name</b>	LAT4
<b>Immunogen</b>	Synthesized peptide derived from human LAT4 AA range: 122-172
<b>Specificity</b>	This antibody detects endogenous levels of LAT4 at Human/Mouse
<b>Formulation</b>	Liquid in PBS containing 50% glycerol, 0.5% BSA and 0.167% sodium azide.
<b>Source</b>	Polyclonal, Rabbit,IgG
<b>Purification</b>	The antibody was affinity-purified from rabbit serum by affinity-chromatography using specific immunogen.
<b>Dilution</b>	WB 1:500-2000
<b>Concentration</b>	1 mg/ml
<b>Purity</b>	≥90%
<b>Storage Stability</b>	-20°C/1 year
<b>Synonyms</b>	Large neutral amino acids transporter small subunit 4 (L-type amino acid transporter 4) (Solute carrier family 43 member 2)
<b>Observed Band</b>	60kD
<b>Cell Pathway</b>	Membrane ; Multi-pass membrane protein .
<b>Tissue Specificity</b>	Detected in several tissues with higher expression in placenta, kidney and peripheral blood leukocytes. In the kidney, is detected in epithelial cells of the distal tubule and collecting duct. In the intestine, is expressed mainly in crypt cells of the intestinal microvilli and epithelial cells in the base of the villus.
<b>Function</b>	function:Sodium-, chloride, pH-independent high affinity transport of large neutral amino acids.,PTM:Glycosylated.,similarity:Belongs to the SLC43A transporter (TC 2.A.1.44) family.,tissue specificity:Detected in several tissues with, higher expression in placenta, kidney and peripheral blood leukocytes. In the kidney is detected in epithelial cells of the distal tubule and collecting duct. In the intestine is expressed mainly in crypt cells of the intestinal microvilli ans epithelial cells in the base of the villus.,

**Nanjing BYabscience technology Co.,Ltd**

网址: [www.njbybio.com](http://www.njbybio.com)

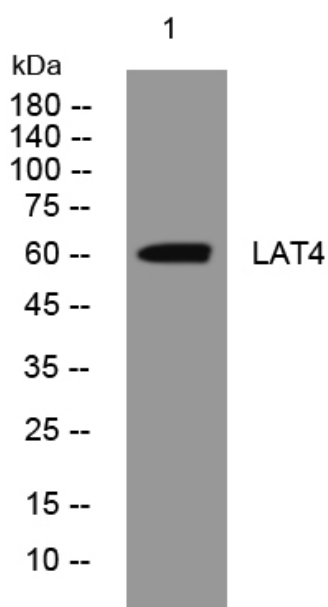
官方热线: 025-5229-8998

监督电话: 15950492658



<b>Background</b>	This gene encodes a member of the L-amino acid transporter-3 or SLC43 family of transporters. The encoded protein mediates sodium-, chloride-, and pH-independent transport of L-isomers of neutral amino acids, including leucine, phenylalanine, valine and methionine. This protein may contribute to the transfer of amino acids across the placental membrane to the fetus. [provided by RefSeq, Mar 2016],
<b>matters needing attention</b>	Avoid repeated freezing and thawing!
<b>Usage suggestions</b>	This product can be used in immunological reaction related experiments. For more information, please consult technical personnel.

## Products Images



Western blot analysis of lysates from HeLa cells, primary antibody was diluted at 1:1000, 4° over night