



FHR5 rabbit pAb

Catalog No	BYab-08051
Isotype	IgG
Reactivity	Human;Rat;Mouse;
Applications	WB
Gene Name	CFHR5 CFHL5 FHR5
Protein Name	FHR5
Immunogen	Synthesized peptide derived from human FHR5 AA range: 353-403
Specificity	This antibody detects endogenous levels of FHR5 at Human
Formulation	Liquid in PBS containing 50% glycerol, 0.5% BSA and 0.165% sodium azide.
Source	Polyclonal, Rabbit,IgG
Purification	The antibody was affinity-purified from rabbit serum by affinity-chromatography using specific immunogen.
Dilution	WB 1:500-2000
Concentration	1 mg/ml
Purity	≥90%
Storage Stability	-20°C/1 year
Synonyms	Complement factor H-related protein 5 (FHR-5)
Observed Band	60kD
Cell Pathway	Secreted.
Tissue Specificity	Expressed by the liver and secreted in plasma.
Function	function:Involved in complement regulation.,similarity:Contains 9 Sushi (CCP/SCR) domains.,subunit:Binds C3b in vitro.,tissue specificity:Expressed by the liver and secreted in plasma.,
Background	This gene is a member of a small complement factor H (CFH) gene cluster on chromosome 1. Each member of this gene family contains multiple short consensus repeats (SCRs) typical of regulators of complement activation. The protein encoded by this gene has nine SCRs with the first two repeats having heparin binding properties, a region within repeats 5-7 having heparin binding and C reactive protein binding properties, and the C-terminal repeats being similar to a complement component 3 b (C3b) binding domain. This protein co-localizes with C3, binds C3b in a dose-dependent manner, and is recruited to tissues damaged

Nanjing BYabscience technology Co.,Ltd



by C-reactive protein. Allelic variations in this gene have been associated, but not causally linked, with two different forms of kidney disease: membranoproliferative glomerulonephritis type II (MPGNII) and hemolytic uraemic syndrome (HUS). [provided by RefSeq, Jan 2010],

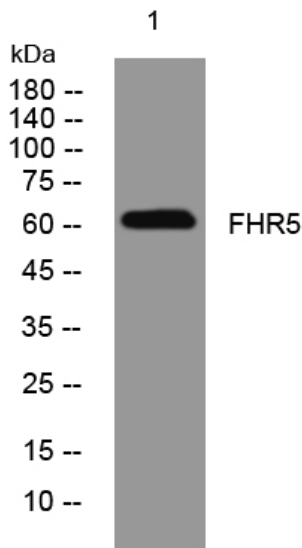
matters needing attention

Avoid repeated freezing and thawing!

Usage suggestions

This product can be used in immunological reaction related experiments. For more information, please consult technical personnel.

Products Images



Western blot analysis of lysates from SW480 cells, primary antibody was diluted at 1:1000, 4° over night