



STX5 rabbit pAb

Catalog No	BYab-07960
Isotype	IgG
Reactivity	Human; Mouse;Rat
Applications	WB
Gene Name	STX5 STX5A
Protein Name	STX5
Immunogen	Synthesized peptide derived from human STX5 AA range: 233-283
Specificity	This antibody detects endogenous levels of STX5 at Human/Mouse/Rat
Formulation	Liquid in PBS containing 50% glycerol, 0.5% BSA and 0.74% sodium azide.
Source	Polyclonal, Rabbit,IgG
Purification	The antibody was affinity-purified from rabbit serum by affinity-chromatography using specific immunogen.
Dilution	WB 1:500-2000
Concentration	1 mg/ml
Purity	≥90%
Storage Stability	-20°C/1 year
Synonyms	Syntaxin-5
Observed Band	38kD
Cell Pathway	Endoplasmic reticulum-Golgi intermediate compartment membrane ; Single-pass type IV membrane protein . Golgi apparatus membrane . Localizes throughout the Golgi apparatus, but most abundant in the cis-most cisternae. .
Tissue Specificity	B-cell,Heart,Kidney,Umbilical cord blood,Uterus,
Function	function:Mediates endoplasmic reticulum to Golgi transport (By similarity). Golgi apparatus membrane; Single-pass type IV membrane protein .,similarity:Belongs to the syntaxin family.,similarity:Contains 1 t-SNARE coiled-coil homology domain.,subunit:Part of a ternary complex containing STX5A, NSFL1C and VCP. Identified in a unique SNARE complex composed of the Golgi SNAREs GOSR1, GOSR2 and YKT6.,
Background	This gene encodes a member of the syntaxin or t-SNARE (target-SNAP receptor) family. These proteins are found on cell membranes and serve as the targets for v-SNAREs (vesicle-SNAP receptors), permitting specific synaptic vesicle docking and fusion. The encoded protein regulates endoplasmic reticulum to Golgi

Nanjing BYabscience technology Co.,Ltd



transport and plays a critical role in autophagy. Autoantibodies targeting the encoded protein may be a diagnostic marker for endometriosis. Alternatively spliced transcript variants encoding multiple isoforms have been observed for this gene. [provided by RefSeq, Sep 2011],

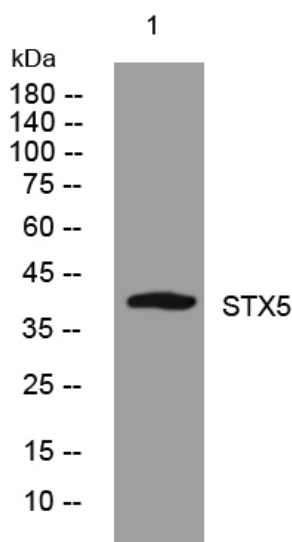
matters needing attention

Avoid repeated freezing and thawing!

Usage suggestions

This product can be used in immunological reaction related experiments. For more information, please consult technical personnel.

Products Images



Western blot analysis of lysates from HpeG2 cells, primary antibody was diluted at 1:1000, 4° over night