



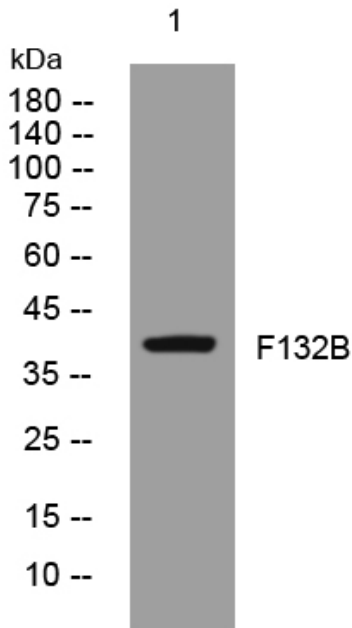
F132B rabbit pAb

| | |
|---------------------------|---|
| Catalog No | BYab-07937 |
| Isotype | IgG |
| Reactivity | Human; Mouse |
| Applications | WB |
| Gene Name | FAM132B |
| Protein Name | F132B |
| Immunogen | Synthesized peptide derived from human F132B AA range: 102-152 |
| Specificity | This antibody detects endogenous levels of F132B at Human/Mouse |
| Formulation | Liquid in PBS containing 50% glycerol, 0.5% BSA and 0.51% sodium azide. |
| Source | Polyclonal, Rabbit,IgG |
| Purification | The antibody was affinity-purified from rabbit serum by affinity-chromatography using specific immunogen. |
| Dilution | WB 1:500-2000 |
| Concentration | 1 mg/ml |
| Purity | ≥90% |
| Storage Stability | -20°C/1 year |
| Synonyms | Protein FAM132B |
| Observed Band | 38kD |
| Cell Pathway | Secreted . |
| Tissue Specificity | Cerebellum,Testis, |
| Function | similarity:Belongs to the FAM132 family., |
| Background | |
| matters needing attention | Avoid repeated freezing and thawing! |
| Usage suggestions | This product can be used in immunological reaction related experiments. For more information, please consult technical personnel. |

Nanjing BYabscience technology Co.,Ltd



Products Images



Western blot analysis of lysates from VEC cells,
primary antibody was diluted at 1:1000, 4° over night