



# MRM1 rabbit pAb

Catalog No	BYab-07923
Isotype	IgG
Reactivity	Human; Mouse
Applications	WB
Gene Name	MRM1
Protein Name	MRM1
Immunogen	Synthesized peptide derived from human MRM1 AA range: 119-169
Specificity	This antibody detects endogenous levels of MRM1 at Human/Mouse
Formulation	Liquid in PBS containing 50% glycerol, 0.5% BSA and 0.37% sodium azide.
Source	Polyclonal, Rabbit,IgG
Purification	The antibody was affinity-purified from rabbit serum by affinity-chromatography using specific immunogen.
Dilution	WB 1:500-2000
Concentration	1 mg/ml
Purity	≥90%
Storage Stability	-20°C/1 year
Synonyms	rRNA methyltransferase 1, mitochondrial (EC 2.1.1.-) (Mitochondrial large ribosomal RNA ribose methylase)
Observed Band	38kD
Cell Pathway	Mitochondrion .
Tissue Specificity	Kidney,Skin,Small intestine,
Function	function:Probably methylates the ribose of guanosine G-2270 in the peptidyl transferase center of the mitochondrial large ribosomal RNA (21S).,similarity:Belongs to the RNA methyltransferase trmH family.,
Background	
matters needing attention	Avoid repeated freezing and thawing!

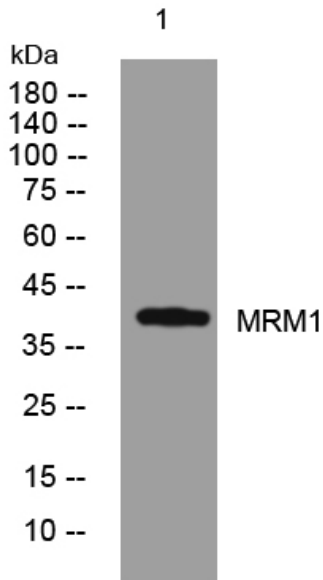
Nanjing BYabscience technology Co.,Ltd



### Usage suggestions

This product can be used in immunological reaction related experiments. For more information, please consult technical personnel.

### Products Images



Western blot analysis of lysates from HpeG2 cells, primary antibody was diluted at 1:1000, 4° over night