



PRS55 rabbit pAb

Catalog No	BYab-07910
Isotype	IgG
Reactivity	Human; Mouse
Applications	WB
Gene Name	PRSS55 UNQ9391/PRO34284
Protein Name	PRS55
Immunogen	Synthesized peptide derived from human PRS55 AA range: 173-223
Specificity	This antibody detects endogenous levels of PRS55 at Human/Mouse
Formulation	Liquid in PBS containing 50% glycerol, 0.5% BSA and 0.24% sodium azide.
Source	Polyclonal, Rabbit,IgG
Purification	The antibody was affinity-purified from rabbit serum by affinity-chromatography using specific immunogen.
Dilution	WB 1:500-2000
Concentration	1 mg/ml
Purity	≥90%
Storage Stability	-20°C/1 year
Synonyms	Serine protease 55 (EC 3.4.21.-)
Observed Band	38kD
Cell Pathway	[Isoform 1]: Cell membrane ; Lipid-anchor, GPI-anchor . Cytoplasm, cytosol . Mainly found in the membrane part of the cells and only in small amounts in the cytosol. .; [Isoform 2]: Cytoplasm, cytosol . Present primarily in the cytosol and only in minor amounts in the membrane fraction. .
Tissue Specificity	Only detected in testis. Expressed in spermatogonia, spermatocytes, spermatids, Leydig and Sertoli cells. Expressed in prostate cancer and ovarian cancer (at protein level).
Function	function:Probable serine protease.,similarity:Belongs to the peptidase S1 family.,similarity:Contains 1 peptidase S1 domain.,
Background	This gene encodes a member of a group of membrane-anchored chymotrypsin (S1)-like serine proteases. The encoded protein is primarily expressed in the Leydig and Sertoli cells of the testis and may be involved in male fertility. Alternate splicing results in multiple transcript variants. [provided by RefSeq, Sep 2010],

Nanjing BYabscience technology Co.,Ltd

网址: www.njbybio.com

官方热线: 025-5229-8998

监督电话: 15950492658



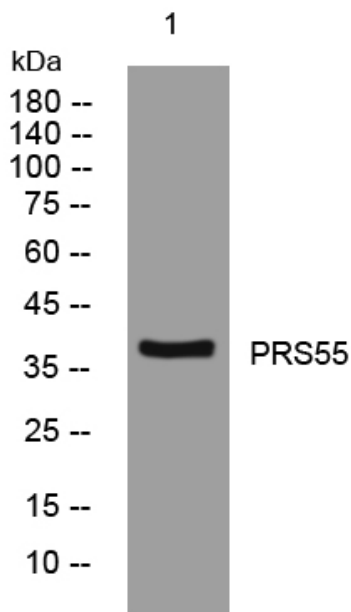
matters needing attention

Avoid repeated freezing and thawing!

Usage suggestions

This product can be used in immunological reaction related experiments. For more information, please consult technical personnel.

Products Images



Western blot analysis of lysates from HpeG2 cells, primary antibody was diluted at 1:1000, 4°over night