



# RARR2 Polyclonal Antibody

<b>Catalog No</b>	BYab-07724
<b>Isotype</b>	IgG
<b>Reactivity</b>	Human;Rat;Mouse;
<b>Applications</b>	WB;ELISA
<b>Gene Name</b>	RARRES2 TIG2
<b>Protein Name</b>	Retinoic acid receptor responder protein 2 (RAR-responsive protein TIG2) (Tazarotene-induced gene 2 protein)
<b>Immunogen</b>	Synthesized peptide derived from part region of human protein
<b>Specificity</b>	RARR2 Polyclonal Antibody detects endogenous levels of protein.
<b>Formulation</b>	Liquid in PBS containing 50% glycerol, and 0.02% sodium azide.
<b>Source</b>	Polyclonal, Rabbit,IgG
<b>Purification</b>	The antibody was affinity-purified from rabbit antiserum by affinity-chromatography using epitope-specific immunogen.
<b>Dilution</b>	WB 1:500-2000 ELISA 1:5000-20000
<b>Concentration</b>	1 mg/ml
<b>Purity</b>	≥90%
<b>Storage Stability</b>	-20°C/1 year
<b>Synonyms</b>	
<b>Observed Band</b>	17kD
<b>Cell Pathway</b>	Secreted .
<b>Tissue Specificity</b>	Expressed at the highest levels in placenta, liver, and white adipose tissue (WAT), and to a lesser extent in many other tissues such as lung, brown adipose tissue, heart, ovary, kidney, skeletal muscle and pancreas. Within WAT, expression is enriched in adipocytes as compared to the stromal vascular fraction. Expression and secretion increases dramatically with adipogenesis. Highly expressed in skin (basal and suprabasal layers of the epidermis, hair follicles and endothelial cells). Expression is elevated in numerous metabolic and inflammatory diseases including psoriasis, obesity, type 2 diabetes, metabolic syndrome and cardiovascular disease.
<b>Function</b>	induction:Inhibited in psoriatic lesions. Activated by tazarotene in skin rafts and in the epidermis of psoriatic lesions.,tissue specificity:Highly expressed in skin (basal and suprabasal layers of the epidermis, hair follicles and endothelial cells). Also found in pancreas, liver, spleen, prostate, ovary, small intestine and colon.,

Nanjing BYabscience technology Co.,Ltd



**Background**

This gene encodes a secreted chemotactic protein that initiates chemotaxis via the ChemR23 G protein-coupled seven-transmembrane domain ligand. Expression of this gene is upregulated by the synthetic retinoid tazarotene and occurs in a wide variety of tissues. The active protein has several roles, including that as an adipokine and as an antimicrobial protein with activity against bacteria and fungi. [provided by RefSeq, Nov 2014],

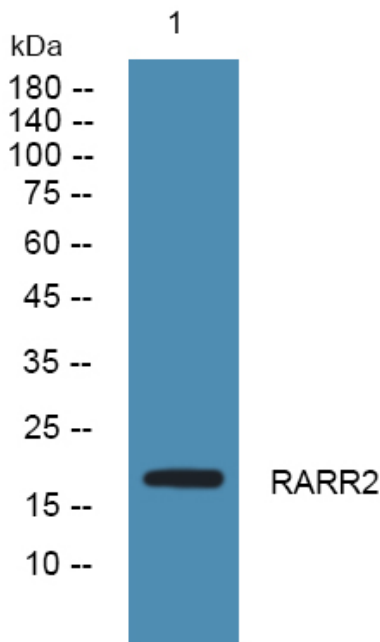
**matters needing attention**

Avoid repeated freezing and thawing!

**Usage suggestions**

This product can be used in immunological reaction related experiments. For more information, please consult technical personnel.

**Products Images**



Western blot analysis of lysates from SH-SY5Y cells, primary antibody was diluted at 1:1000, 4° over night