



# ELAF Polyclonal Antibody

<b>Catalog No</b>	BYab-07235
<b>Isotype</b>	IgG
<b>Reactivity</b>	Human;Rat;Mouse;
<b>Applications</b>	WB;ELISA
<b>Gene Name</b>	PI3 WAP3 WFDC14
<b>Protein Name</b>	Elafin (Elastase-specific inhibitor) (ESI) (Peptidase inhibitor 3) (PI-3) (Protease inhibitor WAP3) (Skin-derived antileukoproteinase) (SKALP) (WAP four-disulfide core domain protein 14)
<b>Immunogen</b>	Synthesized peptide derived from human protein . at AA range: 40-120
<b>Specificity</b>	ELAF Polyclonal Antibody detects endogenous levels of protein.
<b>Formulation</b>	Liquid in PBS containing 50% glycerol, and 0.02% sodium azide.
<b>Source</b>	Polyclonal, Rabbit,IgG
<b>Purification</b>	The antibody was affinity-purified from rabbit antiserum by affinity-chromatography using epitope-specific immunogen.
<b>Dilution</b>	WB 1:500-2000 ELISA 1:5000-20000
<b>Concentration</b>	1 mg/ml
<b>Purity</b>	≥90%
<b>Storage Stability</b>	-20°C/1 year
<b>Synonyms</b>	
<b>Observed Band</b>	12kD
<b>Cell Pathway</b>	Secreted.
<b>Tissue Specificity</b>	Brain,Keratinocyte,Placenta,Sputum,Stratum corneum,
<b>Function</b>	domain:Consists of two domains: the transglutaminase substrate domain (cementoin moiety) and the elastase inhibitor domain. The transglutaminase substrate domain serves as an anchor to localize elafin covalently to specific sites on extracellular matrix proteins.,function:Neutrophil and pancreatic elastase-specific inhibitor of skin. It may prevent elastase-mediated tissue proteolysis.,similarity:Contains 1 WAP domain.,
<b>Background</b>	This gene encodes an elastase-specific inhibitor that functions as an antimicrobial peptide against Gram-positive and Gram-negative bacteria, and fungal pathogens. The protein contains a WAP-type four-disulfide core (WFDC) domain, and is thus a member of the WFDC domain family. Most WFDC gene

**Nanjing BYabscience technology Co.,Ltd**



members are localized to chromosome 20q12-q13 in two clusters: centromeric and telomeric. This gene belongs to the centromeric cluster. Expression of this gene is upregulated by bacterial lipopolysaccharides and cytokines. [provided by RefSeq, Oct 2014],

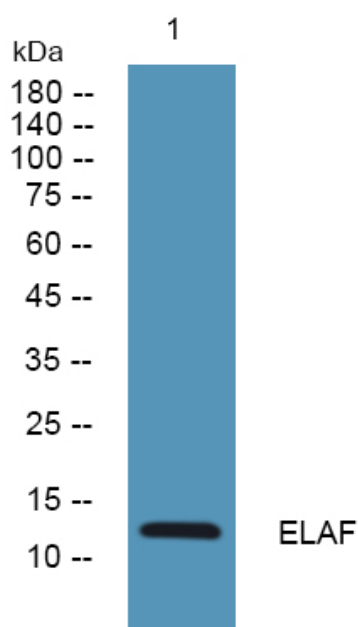
**matters needing attention**

Avoid repeated freezing and thawing!

**Usage suggestions**

This product can be used in immunological reaction related experiments. For more information, please consult technical personnel.

## Products Images



Nanjing BYabscience technology Co.,Ltd

网址: [www.njbybio.com](http://www.njbybio.com)

官方热线: 025-5229-8998

监督电话: 15950492658