



# CPIN1 Polyclonal Antibody

<b>Catalog No</b>	BYab-07050
<b>Isotype</b>	IgG
<b>Reactivity</b>	Human;Rat;Mouse
<b>Applications</b>	WB;ELISA
<b>Gene Name</b>	CIAPIN1 CUA001 PRO0915
<b>Protein Name</b>	Anamorsin (Cytokine-induced apoptosis inhibitor 1) (Fe-S cluster assembly protein DRE2 homolog)
<b>Immunogen</b>	Synthesized peptide derived from part region of human protein
<b>Specificity</b>	CPIN1 Polyclonal Antibody detects endogenous levels of protein.
<b>Formulation</b>	Liquid in PBS containing 50% glycerol, and 0.02% sodium azide.
<b>Source</b>	Polyclonal, Rabbit,IgG
<b>Purification</b>	The antibody was affinity-purified from rabbit antiserum by affinity-chromatography using epitope-specific immunogen.
<b>Dilution</b>	WB 1:500-2000 ELISA 1:5000-20000
<b>Concentration</b>	1 mg/ml
<b>Purity</b>	≥90%
<b>Storage Stability</b>	-20°C/1 year
<b>Synonyms</b>	
<b>Observed Band</b>	34kD
<b>Cell Pathway</b>	Cytoplasm . Nucleus . Mitochondrion intermembrane space .
<b>Tissue Specificity</b>	Ubiquitously expressed. Highly expressed in heart, liver and pancreas.
<b>Function</b>	function:Probably required during hematopoiesis to mediate antiapoptotic effects of various cytokines. Confers resistance to apoptosis when overexpressed.,miscellaneous:'Ana-mors-in' means 'anti-death molecule' in Latin.,similarity:Belongs to the anamorsin family.,tissue specificity:Ubiquitously expressed. Highly expressed in heart, liver and pancreas.,
<b>Background</b>	cytokine induced apoptosis inhibitor 1(CIAPIN1) Homo sapiens CIAPIN1 is a cytokine-induced inhibitor of apoptosis with no relation to apoptosis regulatory molecules of the BCL2 (MIM 151430) or CASP (see MIM 147678) families. Expression of CIAPIN1 is dependent on growth factor stimulation (Shibayama et al., 2004 [PubMed 14970183]).[supplied by OMIM, Mar 2008],

Nanjing BYabscience technology Co.,Ltd



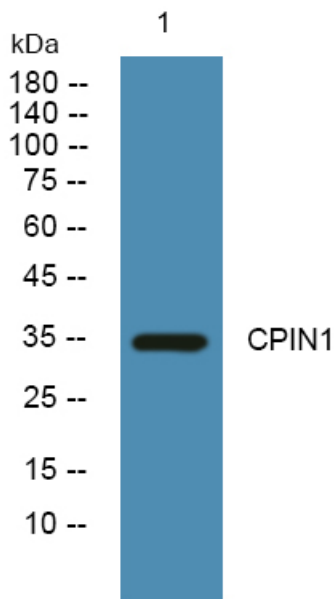
**matters needing attention**

Avoid repeated freezing and thawing!

**Usage suggestions**

This product can be used in immunological reaction related experiments. For more information, please consult technical personnel.

## Products Images



Western blot analysis of lysates from SW480 cells, primary antibody was diluted at 1:1000, 4° over night