



# AMBP Polyclonal Antibody

<b>Catalog No</b>	BYab-06890
<b>Isotype</b>	IgG
<b>Reactivity</b>	Human;Rat;Mouse
<b>Applications</b>	WB;ELISA
<b>Gene Name</b>	AMBP HCP ITIL
<b>Protein Name</b>	Protein AMBP [Cleaved into: Alpha-1-microglobulin (Protein HC) (Alpha-1 microglycoprotein) (Complex-forming glycoprotein heterogeneous in charge); Inter-alpha-trypsin inhibitor light chain (ITI-LC) (B
<b>Immunogen</b>	Synthesized peptide derived from part region of human protein
<b>Specificity</b>	AMBP Polyclonal Antibody detects endogenous levels of protein.
<b>Formulation</b>	Liquid in PBS containing 50% glycerol, and 0.02% sodium azide.
<b>Source</b>	Polyclonal, Rabbit,IgG
<b>Purification</b>	The antibody was affinity-purified from rabbit antiserum by affinity-chromatography using epitope-specific immunogen.
<b>Dilution</b>	WB 1:500-2000 ELISA 1:5000-20000
<b>Concentration</b>	1 mg/ml
<b>Purity</b>	≥90%
<b>Storage Stability</b>	-20°C/1 year
<b>Synonyms</b>	
<b>Observed Band</b>	38kD
<b>Cell Pathway</b>	[Alpha-1-microglobulin]: Secreted . Endoplasmic reticulum . Cytoplasm, cytosol . Cell membrane ; Peripheral membrane protein . Nucleus membrane ; Peripheral membrane protein . Mitochondrion inner membrane ; Peripheral membrane protein . Secreted, extracellular space, extracellular matrix . The cellular uptake occurs via a non-endocytotic pathway and allows for localization to various membrane structures. A specific binding to plasma membrane suggests the presence of a cell receptor, yet to be identified. Directly binds collagen fibers type I. .
<b>Tissue Specificity</b>	[Alpha-1-microglobulin]: Expressed by the liver and secreted in plasma. Occurs in many physiological fluids including plasma, urine, and cerebrospinal fluid (PubMed:11877257). Expressed in epidermal keratinocytes, in dermis and epidermal-dermal junction (at protein level) (PubMed:22096585). Expressed in red blood cells (at protein level) (PubMed:32092412). Expressed in placenta (PubMed:21356557). ; [Inter-alpha-trypsin inhibitor light chain]: Expressed in airway epithelium and submucosal gland (at protein level). Colocalizes with

Nanjing BYabscience technology Co.,Ltd



TNFAIP6 at the ciliary border. Present in bronchoalveolar lavage fluid (at protein level).

**Function**

function:Inter-alpha-trypsin inhibitor inhibits trypsin, plasmin, and lysosomal granulocytic elastase. Inhibits calcium oxalate crystallization.,function:Trypstatin is a trypsin inhibitor.,miscellaneous:In vitro, the first twelve residues of the amino end of the inhibitor appear to have a reactive site capable of inhibiting the activity of a number of enzymes. Its in vivo function is not known.,PTM:3-hydroxykynurenine, an oxidized tryptophan metabolite that is common in biological fluids, reacts with Cys-53, Lys-111, Lys-137, and Lys-149 to form heterogeneous polycyclic chromophores including hydroxanthommatin. The reaction by alpha-1-microglobulin is autocatalytic; the human protein forms chromophore even when expressed in insect and bacterial cells. The chromophore can react with accessible cysteines forming non-reducible thioether cross-links with other molecules of alpha-1-microglobu

**Background**

This gene encodes a complex glycoprotein secreted in plasma. The precursor is proteolytically processed into distinct functioning proteins: alpha-1-microglobulin, which belongs to the superfamily of lipocalin transport proteins and may play a role in the regulation of inflammatory processes, and bikunin, which is a urinary trypsin inhibitor belonging to the superfamily of Kunitz-type protease inhibitors and plays an important role in many physiological and pathological processes. This gene is located on chromosome 9 in a cluster of lipocalin genes. [provided by RefSeq, Jul 2008],

**matters needing attention**

Avoid repeated freezing and thawing!

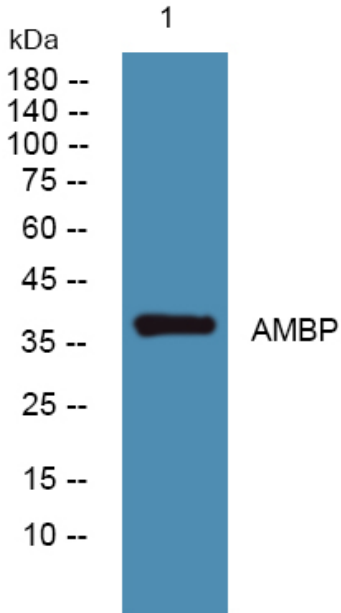
**Usage suggestions**

This product can be used in immunological reaction related experiments. For more information, please consult technical personnel.

Nanjing BYabscience technology Co.,Ltd



## Products Images



Western blot analysis of lysates from KB cells, primary antibody was diluted at 1:1000, 4°over night