



# FOXF1 Polyclonal Antibody

<b>Catalog No</b>	BYab-06802
<b>Isotype</b>	IgG
<b>Reactivity</b>	Human;Mouse
<b>Applications</b>	WB;ELISA
<b>Gene Name</b>	FOXF1 FKHL5 FREAC1
<b>Protein Name</b>	Forkhead box protein F1 (Forkhead-related activator 1) (FREAC-1) (Forkhead-related protein FKHL5) (Forkhead-related transcription factor 1)
<b>Immunogen</b>	Synthesized peptide derived from part region of human protein
<b>Specificity</b>	FOXF1 Polyclonal Antibody detects endogenous levels of protein.
<b>Formulation</b>	Liquid in PBS containing 50% glycerol, and 0.02% sodium azide.
<b>Source</b>	Polyclonal, Rabbit,IgG
<b>Purification</b>	The antibody was affinity-purified from rabbit antiserum by affinity-chromatography using epitope-specific immunogen.
<b>Dilution</b>	WB 1:500-2000 ELISA 1:5000-20000
<b>Concentration</b>	1 mg/ml
<b>Purity</b>	≥90%
<b>Storage Stability</b>	-20°C/1 year
<b>Synonyms</b>	
<b>Observed Band</b>	41kD
<b>Cell Pathway</b>	Nucleus .
<b>Tissue Specificity</b>	Expressed in lung and placenta.
<b>Function</b>	caution:It is uncertain whether Met-1 or Met-26 is the initiator.,domain:Activation domains C-terminal of (and distinct from) the forkhead domains are necessary for transcriptional activation.,function:Probable transcription activator for a number of lung-specific genes.,similarity:Contains 1 fork-head DNA-binding domain.,tissue specificity:Lung and placenta.,
<b>Background</b>	This gene belongs to the forkhead family of transcription factors which is characterized by a distinct forkhead domain. The specific function of this gene has not yet been determined; however, it may play a role in the regulation of pulmonary genes as well as embryonic development. [provided by RefSeq, Jul 2008],

Nanjing BYabscience technology Co.,Ltd



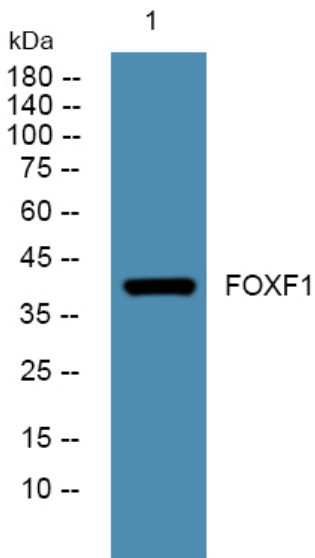
**matters needing attention**

Avoid repeated freezing and thawing!

**Usage suggestions**

This product can be used in immunological reaction related experiments. For more information, please consult technical personnel.

## Products Images



Western blot analysis of lysates from KB cells, primary antibody was diluted at 1:1000, 4° over night