



CEAM8 Polyclonal Antibody

Catalog No	BYab-06777
Isotype	IgG
Reactivity	Human;Rat;Mouse;
Applications	WB;ELISA
Gene Name	CEACAM8 CGM6
Protein Name	Carcinoembryonic antigen-related cell adhesion molecule 8 (CD67 antigen) (Carcinoembryonic antigen CGM6) (Non-specific cross-reacting antigen NCA-95) (CD antigen CD66b)
Immunogen	Synthesized peptide derived from part region of human protein
Specificity	CEAM8 Polyclonal Antibody detects endogenous levels of protein.
Formulation	Liquid in PBS containing 50% glycerol, and 0.02% sodium azide.
Source	Polyclonal, Rabbit,IgG
Purification	The antibody was affinity-purified from rabbit antiserum by affinity-chromatography using epitope-specific immunogen.
Dilution	WB 1:500-2000 ELISA 1:5000-20000
Concentration	1 mg/ml
Purity	≥90%
Storage Stability	-20°C/1 year
Synonyms	
Observed Band	38kD
Cell Pathway	Cell membrane ; Lipid-anchor, GPI-anchor . Cell surface .
Tissue Specificity	Expressed in leukocytes of chronic myeloid Leukemia patients and bone marrow.
Function	similarity:Belongs to the immunoglobulin superfamily. CEA family.,similarity:Contains 1 Ig-like V-type (immunoglobulin-like) domain.,similarity:Contains 2 Ig-like C2-type (immunoglobulin-like) domains.,tissue specificity:Expressed in leukocytes of chronic myeloid Leukemia patients and bone marrow.,
Background	similarity:Belongs to the immunoglobulin superfamily. CEA family.,similarity:Contains 1 Ig-like V-type (immunoglobulin-like) domain.,similarity:Contains 2 Ig-like C2-type (immunoglobulin-like) domains.,tissue specificity:Expressed in leukocytes of chronic myeloid Leukemia patients and bone marrow.,

Nanjing BYabscience technology Co.,Ltd



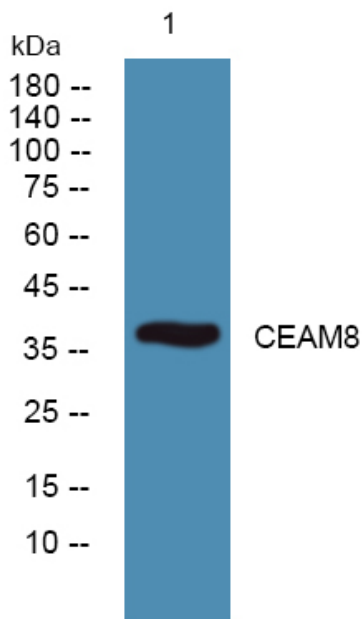
matters needing attention

Avoid repeated freezing and thawing!

Usage suggestions

This product can be used in immunological reaction related experiments. For more information, please consult technical personnel.

Products Images



Western blot analysis of lysates from K562 cells, primary antibody was diluted at 1:1000, 4° over night