



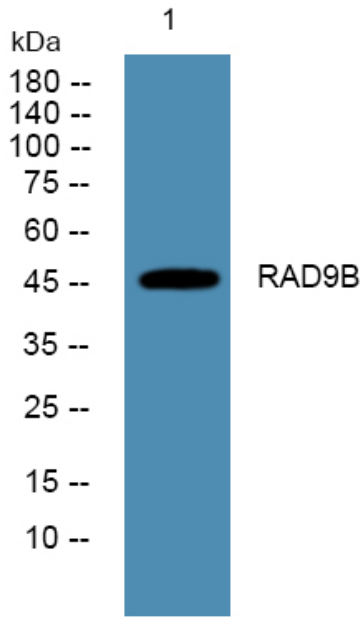
# RAD9B Polyclonal Antibody

<b>Catalog No</b>	BYab-06486
<b>Isotype</b>	IgG
<b>Reactivity</b>	Human;Rat;Mouse;
<b>Applications</b>	WB;ELISA
<b>Gene Name</b>	RAD9B
<b>Protein Name</b>	Cell cycle checkpoint control protein RAD9B (DNA repair exonuclease rad9 homolog B) (hRAD9B)
<b>Immunogen</b>	Synthesized peptide derived from part region of human protein
<b>Specificity</b>	RAD9B Polyclonal Antibody detects endogenous levels of protein.
<b>Formulation</b>	Liquid in PBS containing 50% glycerol, and 0.02% sodium azide.
<b>Source</b>	Polyclonal, Rabbit,IgG
<b>Purification</b>	The antibody was affinity-purified from rabbit antiserum by affinity-chromatography using epitope-specific immunogen.
<b>Dilution</b>	WB 1:500-2000 ELISA 1:5000-20000
<b>Concentration</b>	1 mg/ml
<b>Purity</b>	≥90%
<b>Storage Stability</b>	-20°C/1 year
<b>Synonyms</b>	
<b>Observed Band</b>	46kD
<b>Cell Pathway</b>	nucleoplasm,checkpoint clamp complex,
<b>Tissue Specificity</b>	Expressed in testis and skeletal muscle.
<b>Function</b>	similarity:Belongs to the rad9 family.,subunit:Interacts with HUS1, HUS1B, RAD1, RAD9A and RAD17.,tissue specificity:Expressed in testis and skeletal muscle.,
<b>Background</b>	similarity:Belongs to the rad9 family.,subunit:Interacts with HUS1, HUS1B, RAD1, RAD9A and RAD17.,tissue specificity:Expressed in testis and skeletal muscle.,
<b>matters needing attention</b>	Avoid repeated freezing and thawing!
<b>Usage suggestions</b>	This product can be used in immunological reaction related experiments. For more information, please consult technical personnel.

Nanjing BYabscience technology Co.,Ltd



## Products Images



Western blot analysis of lysates from PC12 cells,  
primary antibody was diluted at 1:1000, 4° over night