



CCNI Polyclonal Antibody

Catalog No	BYab-06431
Isotype	IgG
Reactivity	Human;Mouse
Applications	WB;ELISA
Gene Name	CCNI
Protein Name	Cyclin-I
Immunogen	Synthesized peptide derived from human protein . at AA range: 30-110
Specificity	CCNI Polyclonal Antibody detects endogenous levels of protein.
Formulation	Liquid in PBS containing 50% glycerol, and 0.02% sodium azide.
Source	Polyclonal, Rabbit,IgG
Purification	The antibody was affinity-purified from rabbit antiserum by affinity-chromatography using epitope-specific immunogen.
Dilution	WB 1:500-2000 ELISA 1:5000-20000
Concentration	1 mg/ml
Purity	≥90%
Storage Stability	-20°C/1 year
Synonyms	
Observed Band	41kD
Cell Pathway	Nucleus membrane .
Tissue Specificity	Highest levels in adult heart, brain and skeletal muscle. Lower levels in adult placenta, lung, kidney and pancreas. Also high levels in fetal brain and lower levels in fetal lung, liver and kidney. Also abundant in testis and thyroid.
Function	developmental stage:Expression is independent of the cell cycle in lung fibroblasts.,similarity:Belongs to the cyclin family.,tissue specificity:Highest levels in adult heart, brain and skeletal muscle. Lower levels in adult placenta, lung, kidney and pancreas. Also high levels in fetal brain and lower levels in fetal lung, liver and kidney. Also abundant in testis and thyroid.,
Background	The protein encoded by this gene belongs to the highly conserved cyclin family, whose members are characterized by a dramatic periodicity in protein abundance through the cell cycle. Cyclins function as regulators of CDK kinases. Different cyclins exhibit distinct expression and degradation patterns which contribute to the temporal coordination of each mitotic event. This cyclin shows the highest

Nanjing BYabscience technology Co.,Ltd



similarity with cyclin G. The transcript of this gene was found to be expressed constantly during cell cycle progression. The function of this cyclin has not yet been determined. [provided by RefSeq, Jul 2008],

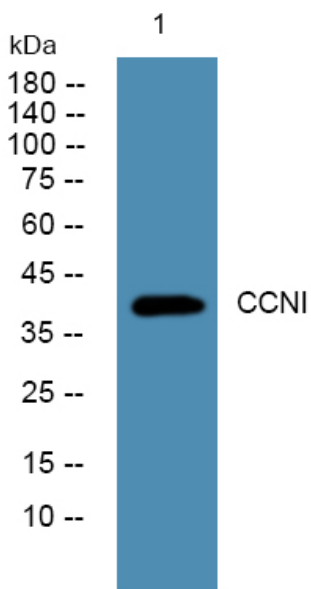
matters needing attention

Avoid repeated freezing and thawing!

Usage suggestions

This product can be used in immunological reaction related experiments. For more information, please consult technical personnel.

Products Images



Western blot analysis of lysates from SW480 cells, primary antibody was diluted at 1:1000, 4° over night