



SL9C1 Polyclonal Antibody

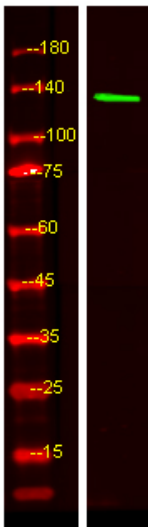
Catalog No	BYab-06207
Isotype	IgG
Reactivity	Human;Rat;Mouse;
Applications	WB;ELISA
Gene Name	SLC9C1 SLC9A10
Protein Name	Sodium/hydrogen exchanger 10 (Na(+)/H(+) exchanger 10) (NHE-10) (Solute carrier family 9 member 10) (Solute carrier family 9 member C1) (Sperm-specific Na(+)/H(+) exchanger) (sNHE)
Immunogen	Synthesized peptide derived from part region of human protein
Specificity	SL9C1 Polyclonal Antibody detects endogenous levels of protein.
Formulation	Liquid in PBS containing 50% glycerol, and 0.02% sodium azide.
Source	Polyclonal, Rabbit,IgG
Purification	The antibody was affinity-purified from rabbit antiserum by affinity-chromatography using epitope-specific immunogen.
Dilution	WB 1:500-2000 ELISA 1:5000-20000
Concentration	1 mg/ml
Purity	≥90%
Storage Stability	-20°C/1 year
Synonyms	
Observed Band	129kD
Cell Pathway	Cell projection, cilium, flagellum membrane ; Multi-pass membrane protein .
Tissue Specificity	Testis,
Function	domain:The ion transport-like region is related to the membrane segments of voltage-gated ion channels. Its function is unknown.,function:Sperm-specific sodium/hydrogen exchanger involved in intracellular pH regulation of spermatozoa. Required for sperm motility and fertility. Involved in sperm cell hyperactivation, a step needed for sperm motility which is essential late in the preparation of sperm for fertilization. Required for the expression and bicarbonate regulation of the soluble adenylyl cyclase (sAC).,similarity:Belongs to the monovalent cation:proton antiporter 1 (CPA1) transporter (TC 2.A.36) family.,similarity:Contains 1 cyclic nucleotide-binding domain.,subunit:Interacts with soluble adenylyl cyclase (sAC).,

Nanjing BYabscience technology Co.,Ltd



Background	SLC9A10 is a member of the sodium-hydrogen exchanger (NHE) family (see SLC9A1, MIM 107310) and is required for male fertility and sperm motility (Wang et al., 2003 [PubMed 14634667]).[supplied by OMIM, Apr 2009],
matters needing attention	Avoid repeated freezing and thawing!
Usage suggestions	This product can be used in immunological reaction related experiments. For more information, please consult technical personnel.

Products Images



Western Blot analysis of HEK293 lysis, using primary antibody at 1:1000 dilution. Secondary antibody(catalog#:RS23920) was diluted at 1:10000