



RB40L Polyclonal Antibody

Catalog No	BYab-06053
Isotype	IgG
Reactivity	Human;Rat;Mouse;
Applications	WB;ELISA
Gene Name	RAB40AL RLGP
Protein Name	Ras-related protein Rab-40A-like (Ras-like GTPase)
Immunogen	Synthesized peptide derived from human protein . at AA range: 90-170
Specificity	RB40L Polyclonal Antibody detects endogenous levels of protein.
Formulation	Liquid in PBS containing 50% glycerol, and 0.02% sodium azide.
Source	Polyclonal, Rabbit,IgG
Purification	The antibody was affinity-purified from rabbit antiserum by affinity-chromatography using epitope-specific immunogen.
Dilution	WB 1:500-2000 ELISA 1:5000-20000
Concentration	1 mg/ml
Purity	≥90%
Storage Stability	-20°C/1 year
Synonyms	
Observed Band	30kD
Cell Pathway	Membrane ; Lipid-anchor ; Cytoplasmic side . Cytoplasm . Mitochondrion .
Tissue Specificity	Expressed in brain, lung, heart, skeletal muscle, kidney and liver. Highest expression in brain. Expressed in fetal brain and kidney.
Function	domain:The SOCS box domain mediates the interaction with the Elongin BC complex, an adapter module in different E3 ubiquitin ligase complexes.,function:May be a substrate-recognition component of a SCF-like ECS (Elongin-Cullin-SOCS-box protein) E3 ubiquitin ligase complex which mediates the ubiquitination and subsequent proteasomal degradation of target proteins.,pathway:Protein modification; protein ubiquitination.,similarity:Belongs to the small GTPase superfamily. Rab family.,similarity:Contains 1 SOCS box domain.,tissue specificity:Expressed in brain, heart, skeletal muscle, kidney and liver. Highest expression in brain.,
Background	This gene encodes a member of the Rab40 subfamily of Rab small GTP-binding proteins that contains a C-terminal suppressors of cytokine signaling box.

Nanjing BYabscience technology Co.,Ltd



Disruptions in this gene are associated with Duchenne muscular dystrophy. [provided by RefSeq, Apr 2010],

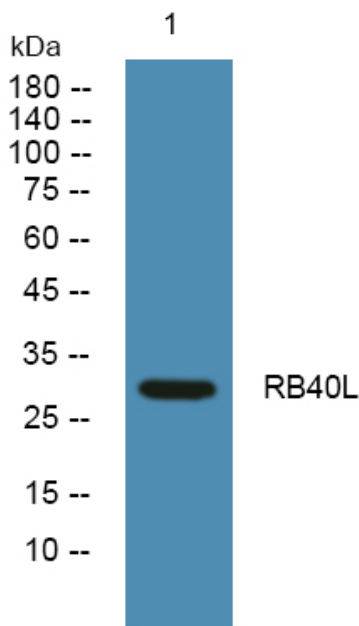
matters needing attention

Avoid repeated freezing and thawing!

Usage suggestions

This product can be used in immunological reaction related experiments. For more information, please consult technical personnel.

Products Images



Western blot analysis of lysates from PC12 cells, primary antibody was diluted at 1:1000, 4° over night