



GEM Polyclonal Antibody

Catalog No	BYab-05618
Isotype	IgG
Reactivity	Human;Rat;Mouse;
Applications	WB;ELISA
Gene Name	GEM KIR
Protein Name	GTP-binding protein GEM (GTP-binding mitogen-induced T-cell protein) (RAS-like protein KIR)
Immunogen	Synthesized peptide derived from part region of human protein
Specificity	GEM Polyclonal Antibody detects endogenous levels of protein.
Formulation	Liquid in PBS containing 50% glycerol, and 0.02% sodium azide.
Source	Polyclonal, Rabbit,IgG
Purification	The antibody was affinity-purified from rabbit antiserum by affinity-chromatography using epitope-specific immunogen.
Dilution	WB 1:500-2000 ELISA 1:5000-20000
Concentration	1 mg/ml
Purity	≥90%
Storage Stability	-20°C/1 year
Synonyms	
Observed Band	32kD
Cell Pathway	Cell membrane; Peripheral membrane protein; Cytoplasmic side.
Tissue Specificity	Most abundant in thymus, spleen, kidney, lung, and testis. Less abundant in heart, brain, liver and skeletal muscle.
Function	function:Could be a regulatory protein, possibly participating in receptor-mediated signal transduction at the plasma membrane. Has guanine nucleotide-binding activity but undetectable intrinsic GTPase activity.,induction:By mitogens.,PTM:Phosphorylated on tyrosine residues.,similarity:Belongs to the small GTPase superfamily. RGK family.,subunit:Interacts with calmodulin in a Ca(2+)-dependent manner. Binds ROCK1.,tissue specificity:Most abundant in thymus, spleen, kidney, lung, and testis. Less abundant in heart, brain, liver and skeletal muscle.,
Background	The protein encoded by this gene belongs to the RAD/GEM family of GTP-binding proteins. It is associated with the inner face of the plasma membrane and could play a role as a regulatory protein in receptor-mediated signal

Nanjing BYabscience technology Co.,Ltd



transduction. Alternative splicing occurs at this locus and two transcript variants encoding the same protein have been identified. [provided by RefSeq, Jul 2008],

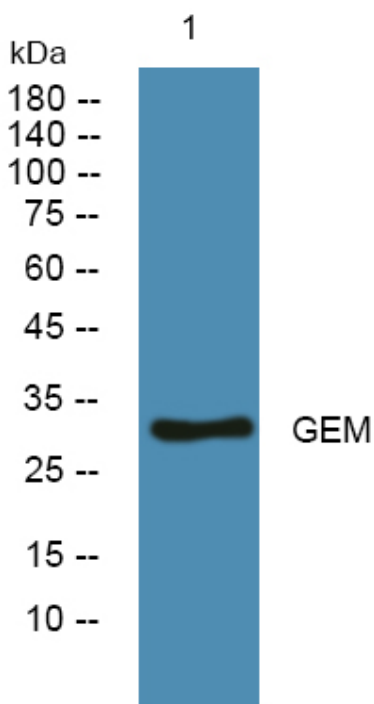
matters needing attention

Avoid repeated freezing and thawing!

Usage suggestions

This product can be used in immunological reaction related experiments. For more information, please consult technical personnel.

Products Images



Western blot analysis of lysates from DU145 cells, primary antibody was diluted at 1:1000, 4° over night