



CENPK Polyclonal Antibody

Catalog No	BYab-05181
Isotype	IgG
Reactivity	Human;Mouse
Applications	WB;ELISA
Gene Name	CENPK ICEN37 FKSG14
Protein Name	Centromere protein K (CENP-K) (Interphase centromere complex protein 37) (Protein AF-5alpha) (p33)
Immunogen	Synthesized peptide derived from human protein . at AA range: 50-130
Specificity	CENPK Polyclonal Antibody detects endogenous levels of protein.
Formulation	Liquid in PBS containing 50% glycerol, and 0.02% sodium azide.
Source	Polyclonal, Rabbit,IgG
Purification	The antibody was affinity-purified from rabbit antiserum by affinity-chromatography using epitope-specific immunogen.
Dilution	WB 1:500-2000 ELISA 1:5000-20000
Concentration	1 mg/ml
Purity	≥90%
Storage Stability	-20°C/1 year
Synonyms	
Observed Band	29kD
Cell Pathway	Nucleus. Chromosome, centromere. Chromosome, centromere, kinetochore. Localizes exclusively in the centromeres. The CENPA-CAD complex is probably recruited on centromeres by the CENPA-NAC complex.
Tissue Specificity	Detected in several fetal organs with highest levels in fetal liver. In adults, it is weakly expressed in lung and placenta.
Function	disease:Chromosomal aberrations involving CENPK are a cause of acute leukemias. Translocation t(5;11)(q12;q23) with MLL.,function:Component of the CENPA-CAD (nucleosome distal) complex, a complex recruited to centromeres which is involved in assembly of kinetochore proteins, mitotic progression and chromosome segregation. May be involved in incorporation of newly synthesized CENPA into centromeres via its interaction with the CENPA-NAC complex.,subcellular location:Localizes exclusively in the centromeres. The CENPA-CAD complex is probably recruited on centromeres by the CENPA-NAC complex.,subunit:Component of the CENPA-CAD complex, composed of CENPI, CENPK, CENPL, CENPO, CENPP, CENPQ, CENPR and CENPS. The

Nanjing BYabscience technology Co.,Ltd



CENPA-CAD complex interacts with the CENPA-NAC complex, at least composed of CENPA, CENPC, CENPH, CENPM, CENPN, CENPT and MLF1IP/CENPU.,tissue specificity:Detected in several fetal org

Background

CENPK is a subunit of a CENPH (MIM 605607)-CENPI (MIM 300065)-associated centromeric complex that targets CENPA (MIM 117139) to centromeres and is required for proper kinetochore function and mitotic progression (Okada et al., 2006 [PubMed 16622420]).[supplied by OMIM, Mar 2008],

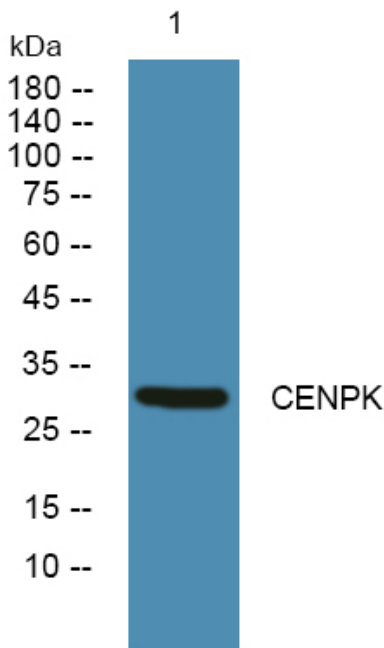
matters needing attention

Avoid repeated freezing and thawing!

Usage suggestions

This product can be used in immunological reaction related experiments. For more information, please consult technical personnel.

Products Images



Western blot analysis of lysates from U2OS cells, primary antibody was diluted at 1:1000, 4° over night