



TERF2 Polyclonal Antibody

| | |
|--------------------|---|
| Catalog No | BYab-04900 |
| Isotype | IgG |
| Reactivity | Human;Mouse |
| Applications | WB;ELISA |
| Gene Name | TERF2 TRBF2 TRF2 |
| Protein Name | Telomeric repeat-binding factor 2 (TTAGGG repeat-binding factor 2) (Telomeric DNA-binding protein) |
| Immunogen | Synthesized peptide derived from human protein . at AA range: 130-210 |
| Specificity | TERF2 Polyclonal Antibody detects endogenous levels of protein. |
| Formulation | Liquid in PBS containing 50% glycerol, and 0.02% sodium azide. |
| Source | Polyclonal, Rabbit,IgG |
| Purification | The antibody was affinity-purified from rabbit antiserum by affinity-chromatography using epitope-specific immunogen. |
| Dilution | WB 1:500-2000 ELISA 1:5000-20000 |
| Concentration | 1 mg/ml |
| Purity | ≥90% |
| Storage Stability | -20°C/1 year |
| Synonyms | |
| Observed Band | 55kD |
| Cell Pathway | Nucleus . Chromosome, telomere . Colocalizes with telomeric DNA in interphase cells and is located at chromosome ends during metaphase. |
| Tissue Specificity | Ubiquitous. Highly expressed in spleen, thymus, prostate, uterus, testis, small intestine, colon and peripheral blood leukocytes. |
| Function | function: Binds the telomeric double-stranded TTAGGG repeat. Protects against end-to-end fusion of chromosomes and plays a role in successful progression through the cell division cycle. Component of the shelterin complex (telosome) that is involved in the regulation of telomere length and protection. Shelterin associates with arrays of double-stranded TTAGGG repeats added by telomerase and protects chromosome ends; without its protective activity, telomeres are no longer hidden from the DNA damage surveillance and chromosome ends are inappropriately processed by DNA repair pathways. PTM: Phosphorylated upon DNA damage, probably by ATM or ATR. similarity: Contains 1 HTH myb-type DNA-binding domain. subcellular location: Colocalizes with telomeric DNA in interphase cells and is located at chromosome ends during |

Nanjing BYabscience technology Co.,Ltd



metaphase.,subunit:Homodimer. Component of the shelterin complex (telosome) compos

Background

This gene encodes a telomere specific protein, TERF2, which is a component of the telomere nucleoprotein complex. This protein is present at telomeres in metaphase of the cell cycle, is a second negative regulator of telomere length and plays a key role in the protective activity of telomeres. While having similar telomere binding activity and domain organization, TERF2 differs from TERF1 in that its N terminus is basic rather than acidic. [provided by RefSeq, Jul 2008],

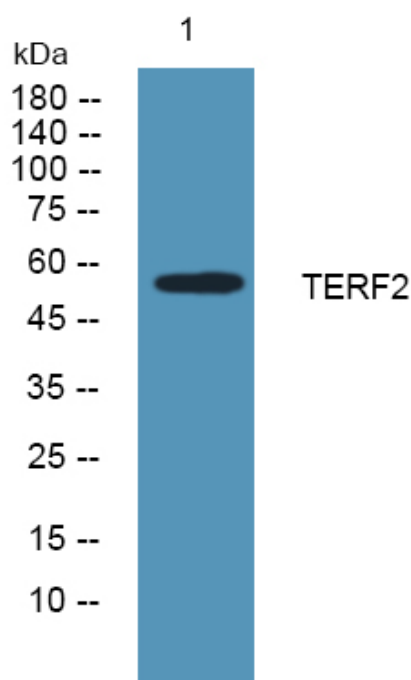
matters needing attention

Avoid repeated freezing and thawing!

Usage suggestions

This product can be used in immunological reaction related experiments. For more information, please consult technical personnel.

Products Images



Western blot analysis of lysates from SH-SY5Y cells, primary antibody was diluted at 1:1000, 4° over night

Nanjing BYabscience technology Co.,Ltd

网址: www.njbybio.com

官方热线: 025-5229-8998

监督电话: 15950492658