



NBR1 mouse Monoclonal Antibody(7C3)

| | |
|--------------------|---|
| Catalog No | BYab-04870 |
| Isotype | IgG |
| Reactivity | Human;Mouse;Rat |
| Applications | IF;IHC |
| Gene Name | NBR1 1A13B KIAA0049 M17S2 MIG19 |
| Protein Name | Next to BRCA1 gene 1 protein (Cell migration-inducing gene 19 protein) (Membrane component chromosome 17 surface marker 2) (Neighbor of BRCA1 gene 1 protein) (Protein 1A1-3B) |
| Immunogen | Recombinant Protein of NBR1 |
| Specificity | The antibody detects endogenous NBR1 protein |
| Formulation | Liquid in PBS containing 50% glycerol, 0.5% BSA and 0.02% sodium azide. |
| Source | Monoclonal, Mouse |
| Purification | The antibody was affinity-purified from mouse antiserum by affinity-chromatography using epitope-specific immunogen. |
| Dilution | IF: 1:50-200 IHC-p 1:50-300 |
| Concentration | 1 mg/ml |
| Purity | ≥90% |
| Storage Stability | -20°C/1 year |
| Synonyms | Next to BRCA1 gene 1 protein (Cell migration-inducing gene 19 protein) (Membrane component chromosome 17 surface marker 2) (Neighbor of BRCA1 gene 1 protein) (Protein 1A1-3B) |
| Observed Band | 120kD |
| Cell Pathway | Cytoplasm . Cytoplasmic vesicle, autophagosome . Lysosome . Cytoplasm, myofibril, sarcomere, M line . In cardiac muscles localizes to the sarcomeric M line (By similarity). Is targeted to lysosomes for degradation (PubMed:19250911). . |
| Tissue Specificity | Bone marrow,Lymph,Ovary,Testis, |
| Function | caution:Was originally (PubMed:8069304) thought to be the ovarian carcinoma antigen CA125.,domain:The OPR domain mediates interaction with SQSTM1.,similarity:Contains 1 OPR domain.,similarity:Contains 1 UBA domain.,similarity:Contains 1 ZZ-type zinc finger.,subunit:Homooligomer and heterooligomer. Interacts with SQSTM1, titin/TTN and RNF29., |

Nanjing BYabscience technology Co.,Ltd



Background

The protein encoded by this gene was originally identified as an ovarian tumor antigen monitored in ovarian cancer. The encoded protein contains a B-box/coiled-coil motif, which is present in many genes with transformation potential. It functions as a specific autophagy receptor for the selective autophagic degradation of peroxisomes by forming intracellular inclusions with ubiquitylated autophagic substrates. This gene is located on a region of chromosome 17q21.1 that is in close proximity to the BRCA1 tumor suppressor gene. Alternative splicing of this gene results in multiple transcript variants. [provided by RefSeq, Apr 2014],

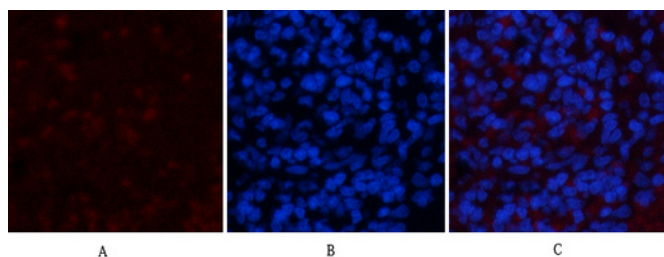
matters needing attention

Avoid repeated freezing and thawing!

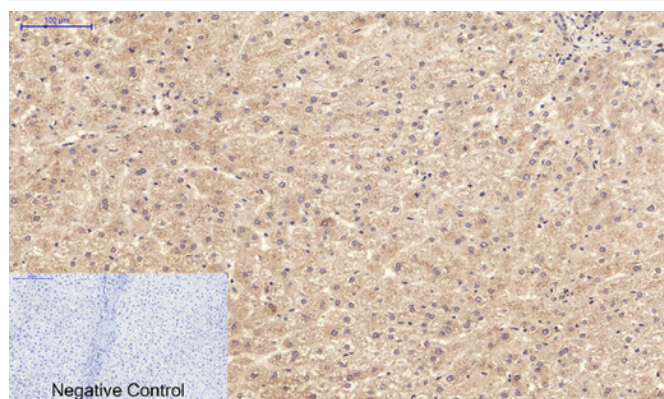
Usage suggestions

This product can be used in immunological reaction related experiments. For more information, please consult technical personnel.

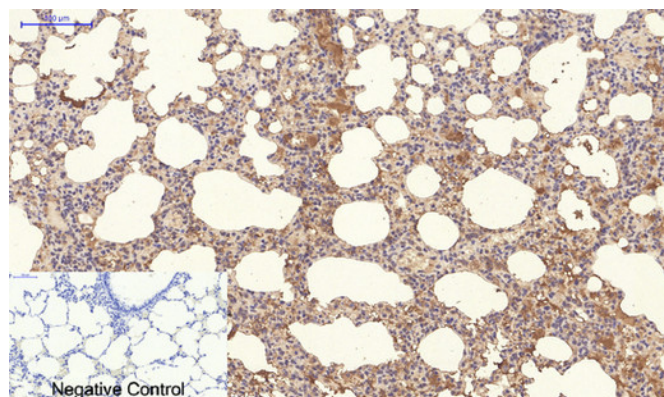
Products Images



Immunofluorescence analysis of rat-spleen tissue. 1, NBR1 Mouse Monoclonal Antibody(7C3)(red) was diluted at 1:200(4°C, overnight). 2, Cy3 labeled Secondary antibody was diluted at 1:300(room temperature, 50min). 3, Picture B: DAPI(blue) 10min. Picture A: Target. Picture B: DAPI. Picture C: merge of A+B

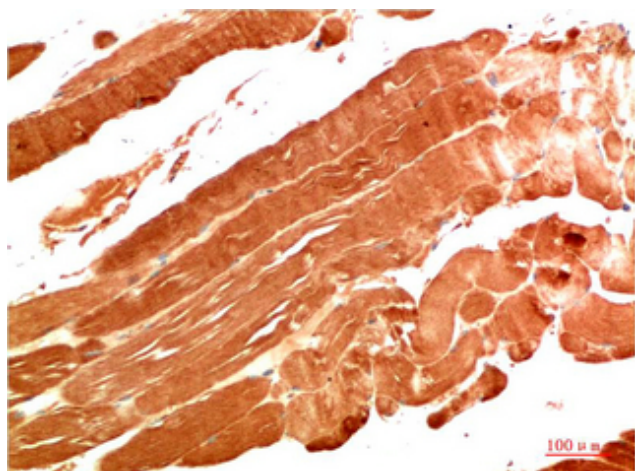


Immunohistochemical analysis of paraffin-embedded Human-liver tissue. 1, NBR1 Mouse Monoclonal Antibody(7C3) was diluted at 1:200(4°C, overnight). 2, Sodium citrate pH 6.0 was used for antibody retrieval(>98°C, 20min). 3, Secondary antibody was diluted at 1:200(room temperature, 30min). Negative control was used by secondary antibody only.



Immunohistochemical analysis of paraffin-embedded Rat-lung tissue. 1, NBR1 Mouse Monoclonal Antibody(7C3) was diluted at 1:200(4°C, overnight). 2, Sodium citrate pH 6.0 was used for antibody retrieval(>98°C, 20min). 3, Secondary antibody was diluted at 1:200(room temperature, 30min). Negative control was used by secondary antibody only.

Nanjing BYabscience technology Co.,Ltd



Immunohistochemical analysis of paraffin-embedded Human Skeletal Muscle Tissue using NBR1 Mouse mAb diluted at 1:200.