



Epsilon Tubulin mouse Monoclonal Antibody(2B3)

Catalog No	BYab-04849
Isotype	IgG
Reactivity	Human;Rat;Mouse
Applications	WB
Gene Name	TUBE1 TUBE
Protein Name	Epsilon Tubulin
Immunogen	Synthetic Peptide of Epsilon Tubulin
Specificity	Epsilon Tubulin protein detects endogenous levels of Epsilon Tubulin
Formulation	Liquid in PBS containing 50% glycerol, 0.5% BSA and 0.02% sodium azide.
Source	Monoclonal, Mouse
Purification	The antibody was affinity-purified from mouse ascites by affinity-chromatography using specific immunogen.
Dilution	WB 1:1000-2000
Concentration	1 mg/ml
Purity	≥90%
Storage Stability	-20°C/1 year
Synonyms	Tubulin epsilon chain (Epsilon-tubulin)
Observed Band	55kD
Cell Pathway	Cytoplasm, cytoskeleton, microtubule organizing center, centrosome . Associated with pericentriolar material. .
Tissue Specificity	Testis,
Function	similarity:Belongs to the tubulin family.,subcellular location:Associated with pericentriolar material.,
Background	This gene encodes a member of the tubulin superfamily. This protein localizes to the centriolar sub-distal appendages that are associated with the older of the two centrioles after centrosome duplication. This protein plays a central role in organization of the microtubules during centriole duplication. A pseudogene of this gene is found on chromosome 5.[provided by RefSeq, Jan 2009],
matters needing attention	Avoid repeated freezing and thawing!

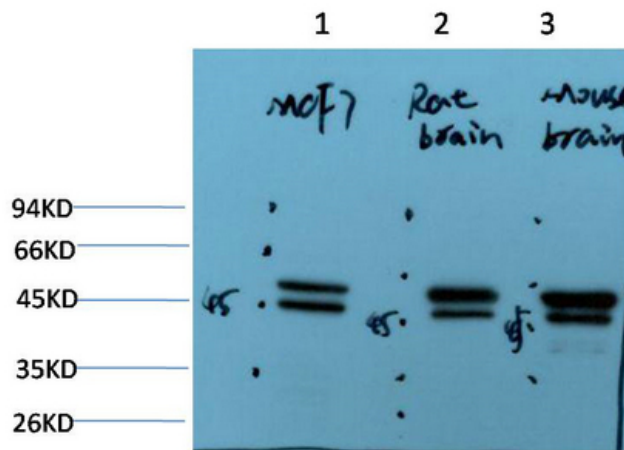
Nanjing BYabscience technology Co.,Ltd



Usage suggestions

This product can be used in immunological reaction related experiments. For more information, please consult technical personnel.

Products Images



Western blot analysis of 1) MCF7Cell Lysate, 2) Rat Brain Tissue Lysate, 3) Mouse Brain Tissue Lysate using Epsilon Tubulin Mouse mAb diluted at 1:2000.