



Epsilon Tubulin mouse Monoclonal Antibody(3G1)

Catalog No	BYab-04845
Isotype	IgG
Reactivity	Human;Rat;Mouse
Applications	IF;IHC
Gene Name	TUBE1 TUBE
Protein Name	Epsilon Tubulin
Immunogen	Synthetic Peptide of Epsilon Tubulin
Specificity	Epsilon Tubulin protein detects endogenous levels of Epsilon Tubulin
Formulation	Liquid in PBS containing 50% glycerol, 0.5% BSA and 0.02% sodium azide.
Source	Monoclonal, Mouse
Purification	The antibody was affinity-purified from mouse ascites by affinity-chromatography using specific immunogen.
Dilution	IF: 1:50-200 IHC 1:100-200
Concentration	1 mg/ml
Purity	≥90%
Storage Stability	-20°C/1 year
Synonyms	Tubulin epsilon chain (Epsilon-tubulin)
Observed Band	55kD
Cell Pathway	Cytoplasm, cytoskeleton, microtubule organizing center, centrosome . Associated with pericentriolar material. .
Tissue Specificity	Testis,
Function	similarity:Belongs to the tubulin family.,subcellular location:Associated with pericentriolar material.,
Background	This gene encodes a member of the tubulin superfamily. This protein localizes to the centriolar sub-distal appendages that are associated with the older of the two centrioles after centrosome duplication. This protein plays a central role in organization of the microtubules during centriole duplication. A pseudogene of this gene is found on chromosome 5.[provided by RefSeq, Jan 2009],
matters needing attention	Avoid repeated freezing and thawing!

Nanjing BYabscience technology Co.,Ltd

网址: www.njbybio.com

官方热线: 025-5229-8998

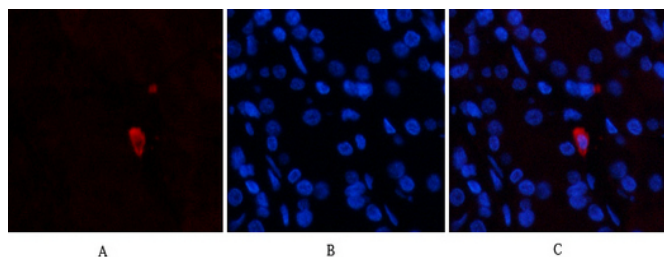
监督电话: 15950492658



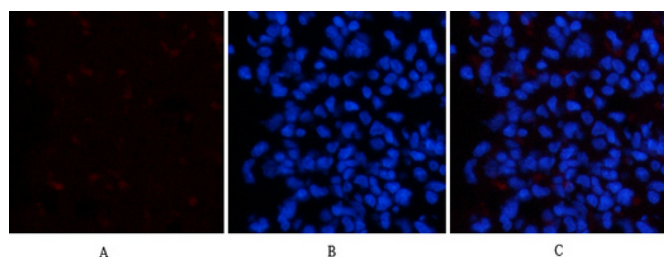
Usage suggestions

This product can be used in immunological reaction related experiments. For more information, please consult technical personnel.

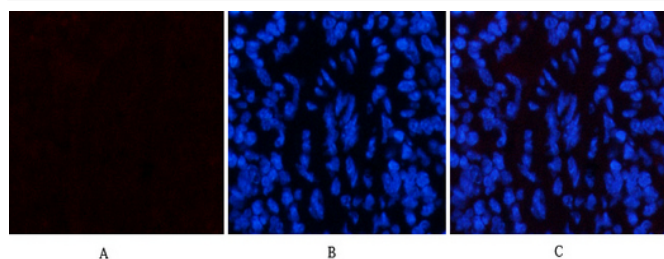
Products Images



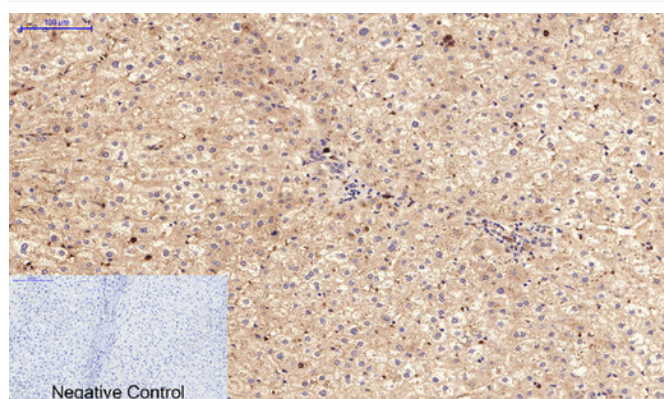
Immunofluorescence analysis of human-stomach tissue. 1, Epsilon Tubulin Mouse Monoclonal Antibody(3G1)(red) was diluted at 1:200(4°C, overnight). 2, Cy3 labeled Secondary antibody was diluted at 1:300(room temperature, 50min). 3, Picture B: DAPI(blue) 10min. Picture A: Target. Picture B: DAPI. Picture C: merge of A+B



Immunofluorescence analysis of rat-lung tissue. 1, Epsilon Tubulin Mouse Monoclonal Antibody(3G1)(red) was diluted at 1:200(4°C, overnight). 2, Cy3 labeled Secondary antibody was diluted at 1:300(room temperature, 50min). 3, Picture B: DAPI(blue) 10min. Picture A: Target. Picture B: DAPI. Picture C: merge of A+B



Immunofluorescence analysis of mouse-spleen tissue. 1, Epsilon Tubulin Mouse Monoclonal Antibody(3G1)(red) was diluted at 1:200(4°C, overnight). 2, Cy3 labeled Secondary antibody was diluted at 1:300(room temperature, 50min). 3, Picture B: DAPI(blue) 10min. Picture A: Target. Picture B: DAPI. Picture C: merge of A+B



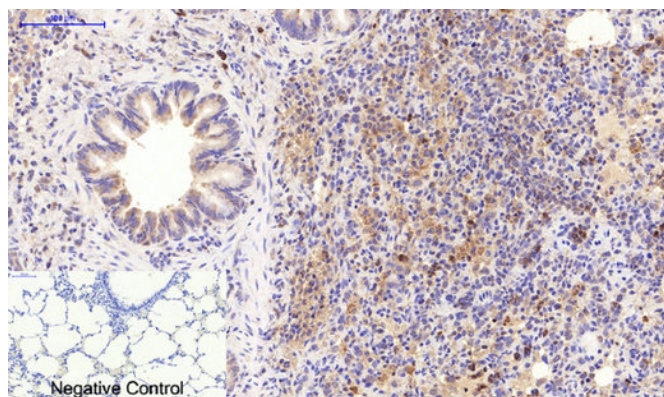
Immunohistochemical analysis of paraffin-embedded Human-liver tissue. 1, Epsilon Tubulin Mouse Monoclonal Antibody(3G1) was diluted at 1:200(4°C, overnight). 2, Sodium citrate pH 6.0 was used for antibody retrieval(>98°C, 20min). 3, Secondary antibody was diluted at 1:200(room temperature, 30min). Negative control was used by secondary antibody only.

Nanjing BYabscience technology Co.,Ltd

网址: www.njbybio.com

官方热线: 025-5229-8998

监督电话: 15950492658



Immunohistochemical analysis of paraffin-embedded Rat-lung tissue. 1,Epsilon Tubulin Mouse Monoclonal Antibody(3G1) was diluted at 1:200(4°C,overnight). 2, Sodium citrate pH 6.0 was used for antibody retrieval(>98°C,20min). 3,Secondary antibody was diluted at 1:200(room tempeRature, 30min). Negative control was used by secondary antibody only.