



P27 Kip1 Mouse mAb(1A7)

Catalog No	BYab-04796
Isotype	IgG
Reactivity	Human; Mouse;Rat
Applications	IHC;WB
Gene Name	P27 Kip1
Protein Name	P27 Kip1
Immunogen	Synthesized peptide derived from human P27 Kip1
Specificity	This antibody detects endogenous levels of P27 Kip1 at Human, Mouse,Rat
Formulation	Liquid in PBS containing 50% glycerol, 0.5% BSA and 0.35% sodium azide.
Source	Monoclonal, Mouse
Purification	The antibody was affinity-purified from mouse ascites by affinity-chromatography using specific immunogen.
Dilution	IHC-p1:50-200 ,WB 1:1000-2000
Concentration	1 mg/ml
Purity	≥90%
Storage Stability	-20°C/1 year
Synonyms	
Observed Band	27kD
Cell Pathway	
Tissue Specificity	
Function	
Background	Cyclin dependent kinase inhibitor 1B(CDKN1B) Homo sapiens This gene encodes a cyclin-dependent kinase inhibitor, which shares a limited similarity with CDK inhibitor CDKN1A/p21. The encoded protein binds to and prevents the activation of cyclin E-CDK2 or cyclin D-CDK4 complexes, and thus controls the cell cycle progression at G1. The degradation of this protein, which is triggered by its CDK dependent phosphorylation and subsequent ubiquitination by SCF complexes, is required for the cellular transition from quiescence to the proliferative state.

Nanjing BYabscience technology Co.,Ltd



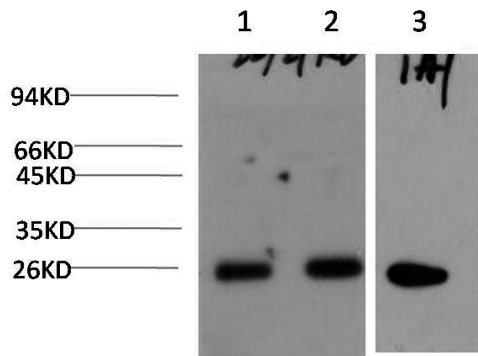
matters needing attention

Avoid repeated freezing and thawing!

Usage suggestions

This product can be used in immunological reaction related experiments. For more information, please consult technical personnel.

Products Images



Western blot analysis of 1)MCF7 Cell, 2) HepG2 Cell, 3) C2C12 Cell Lysate using p27 Kpi1Mouse Monoclonal mAb diluted at 1:2,000.