



Myosin Heavy Chain Monoclonal Antibody(11C2)

Catalog No	BYab-04746
Isotype	IgG
Reactivity	Human;Mouse;Rat;FruitFly;Nematode
Applications	IF
Gene Name	
Protein Name	
Immunogen	Synthetic Peptide of Myosin Heavy Chain
Specificity	The antibody detects endogenous MHC proteins.
Formulation	PBS, pH 7.4, containing 0.5%BSA, 0.02% sodium azide as Preservative and 50% Glycerol.
Source	Monoclonal, Mouse
Purification	The antibody was affinity-purified from mouse ascites by affinity-chromatography using specific immunogen.
Dilution	IF: 1:100
Concentration	1 mg/ml
Purity	≥90%
Storage Stability	-20°C/1 year
Synonyms	
Observed Band	220kD
Cell Pathway	
Tissue Specificity	
Function	
Background	Skeletal muscle Myosin or myosin II is the motor protein that generates force to drive muscle contraction. It is a 520 kDa hexamer comprised of two heavy chains and four light chains. Myosin heavy chain is 220 kDa in size and consists of a long coiled-coil domain tail that mediates dimerization of the two heavy chains and a globular head region that mediates ATP-dependent sliding of actin filaments. Myosin heavy chain can be proteolytically cleaved to produce heavy meromyosin, which includes the S1 motor domain (head region) and first third of the coiled coil domain, and light meromyosin, which includes the C-terminal two thirds of the coiled coil domain.

Nanjing BYabscience technology Co.,Ltd



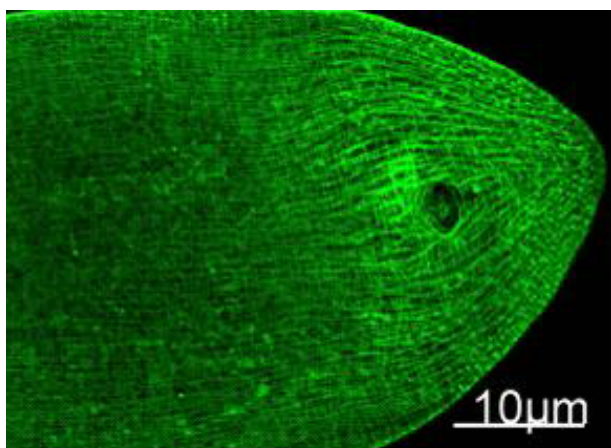
matters needing attention

Avoid repeated freezing and thawing!

Usage suggestions

This product can be used in immunological reaction related experiments. For more information, please consult technical personnel.

Products Images



Immunofluorescence Staining of nematode tissue with MYH mouse mAb (11C2) diluted at 1:100. (Provide by Tsinghua University) .