



β-Tubulin Monoclonal Antibody(5G3), Cy3 Conjugated

Catalog No	BYab-04719
Isotype	IgG
Reactivity	Human;Rat;Mouse;Mk;Dg;Ch;Hamster;Rabbit;sheep;Insect;Yeast
Applications	WB;IF;IHC
Gene Name	TUBB3
Protein Name	Tubulin beta-3 chain
Immunogen	
Specificity	β-Tubulin Monoclonal Antibody(5G3) Cy3 Conjugated specially designed for your Immunofluorescence analysis.
Formulation	Liquid in PBS, pH 7.4, containing 0.02% sodium azide as preservative and 50% Glycerol.
Source	Monoclonal, Mouse IgG1
Purification	The antibody was affinity-purified from mouse ascites by affinity-chromatography using specific immunogen.
Dilution	Optimal working dilutions should be determined experimentally by the investigator. Suggested starting dilutions are as follows: IHC: 1:200, IF 1:200.
Concentration	1 mg/ml
Purity	≥90%
Storage Stability	-20°C/1 year
Synonyms	TUBB3
Observed Band	
Cell Pathway	Cytoplasm, cytoskeleton . Cell projection, growth cone . Cell projection, lamellipodium . Cell projection, filopodium .
Tissue Specificity	Expression is primarily restricted to central and peripheral nervous system. Greatly increased expression in most cancerous tissues.
Function	domain:The highly acidic C-terminal region may bind cations such as calcium.,function:Receptor for MSH (alpha, beta and gamma) and ACTH. The activity of this receptor is mediated by G proteins which activate adenylate cyclase.,function:Tubulin is the major constituent of microtubules. It binds two moles of GTP, one at an exchangeable site on the beta chain and one at a non-exchangeable site on the alpha-chain.,polymorphism:Genetic variations in MC1R are associated with variation in skin/hair/eye pigmentation type 2 (SHEP2) [MIM:266300]. Hair, eye and skin pigmentation are among the most visible examples of human phenotypic variation, with a broad normal range that is subject to substantial geographic stratification. In the case of skin, individuals tend

Nanjing BYabs science technology Co.,Ltd



to have lighter pigmentation with increasing distance from the equator. By contrast, the majority of variation in human eye and hair col

Background

tubulin beta 3 class III(TUBB3) Homo sapiens This gene encodes a class III member of the beta tubulin protein family. Beta tubulins are one of two core protein families (alpha and beta tubulins) that heterodimerize and assemble to form microtubules. This protein is primarily expressed in neurons and may be involved in neurogenesis and axon guidance and maintenance. Mutations in this gene are the cause of congenital fibrosis of the extraocular muscles type 3. Alternate splicing results in multiple transcript variants. A pseudogene of this gene is found on chromosome 6. [provided by RefSeq, Oct 2010],

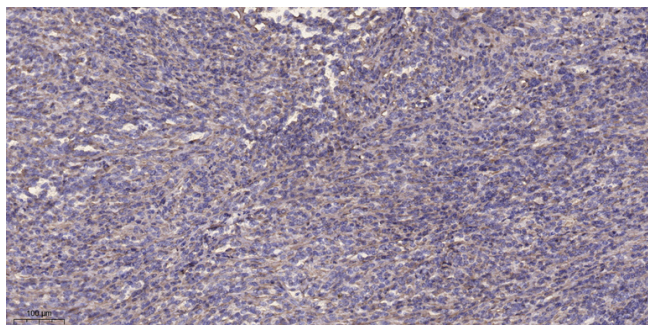
matters needing attention

Avoid repeated freezing and thawing!

Usage suggestions

This product can be used in immunological reaction related experiments. For more information, please consult technical personnel.

Products Images



Immunohistochemical analysis of paraffin-embedded human Colon cancer. 1, Antibody was diluted at 1:200(4° overnight). 2, Tris-EDTA,pH9.0 was used for antigen retrieval. 3,Secondary antibody was diluted at 1:200(room temperature, 45min).