



# Calumenin mouse mAb

Catalog No	BYab-04470
Isotype	IgG
Reactivity	Human;Mouse
Applications	WB
Gene Name	calu
Protein Name	
Immunogen	Purified recombinant human Calumenin protein fragments expressed in E.coli.
Specificity	This antibody detects endogenous levels of Calumenin and does not cross-react with related proteins.
Formulation	Liquid in PBS containing 50% glycerol, 0.5% BSA and 0.02% sodium azide.
Source	Monoclonal, Mouse
Purification	The antibody was affinity-purified from mouse ascites by affinity-chromatography using epitope-specific immunogen.
Dilution	wb 1:1000
Concentration	1 mg/ml
Purity	≥90%
Storage Stability	-20°C/1 year
Synonyms	CALU;CALU_HUMAN;Calumenin 1;Calumenin 2;Calumenin;Crocabin;crocabin-like protein; FLJ90608;IEF SSP 9302;multiple EF-hand protein;OTTHUMP00000212712;OTTHUMP00000212713; OTTHUMP00000212714;OTTHUMP00000212715.
Observed Band	37kD
Cell Pathway	Endoplasmic reticulum membrane . Golgi apparatus . Secreted . Melanosome . Sarcoplasmic reticulum lumen . Identified by mass spectrometry in melanosome fractions from stage I to stage IV. .
Tissue Specificity	Ubiquitously expressed. Expressed at high levels in heart, placenta and skeletal muscle, at lower levels in lung, kidney and pancreas and at very low levels in brain and liver.
Function	function:Involved in regulation of vitamin K-dependent carboxylation of multiple amino-terminal glutamate residues. Seems to inhibit gamma-carboxylase GGcX. Binds 7 calcium ions with a low affinity.,similarity:Belongs to the CREC family.,similarity:Contains 6 EF-hand domains.,subcellular location:Identified by mass spectrometry in melanosome fractions from stage I to stage

**Nanjing BYabscience technology Co.,Ltd**



IV.,subunit:Interacts with GGCX.,tissue specificity:Ubiquitously expressed. Expressed at high levels in heart, placenta and skeletal muscle, at lower levels in lung, kidney and pancreas and at very low levels in brain and liver.,

## Background

calumenin(CALU) Homo sapiens The product of this gene is a calcium-binding protein localized in the endoplasmic reticulum (ER) and it is involved in such ER functions as protein folding and sorting. This protein belongs to a family of multiple EF-hand proteins (CERC) that include reticulocalbin, ERC-55, and Cab45 and the product of this gene. Alternatively spliced transcript variants encoding different isoforms have been identified. [provided by RefSeq, Oct 2008],

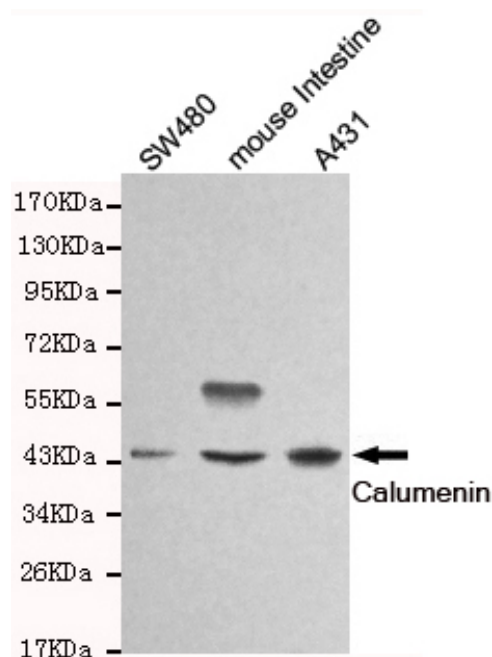
## matters needing attention

Avoid repeated freezing and thawing!

## Usage suggestions

This product can be used in immunological reaction related experiments. For more information, please consult technical personnel.

## Products Images



Western blot detection of Calumenin in SW480,mouse intestine and A431 cell lysates and using Calumenin mouse mAb (1:1000 diluted).Predicted band size: 37KDa.Observed band size:45KDa.

**Nanjing BYabscience technology Co.,Ltd**

网址: [www.njbybio.com](http://www.njbybio.com)

官方热线: 025-5229-8998

监督电话: 15950492658