



PP2A α and β mouse mAb

Catalog No	BYab-04465
Isotype	IgG
Reactivity	Human;Mouse;Rat
Applications	WB;IP
Gene Name	ppp2cb
Protein Name	
Immunogen	Purified recombinant human full length PP2A beta protein expressed in E.coli
Specificity	This antibody detects endogenous levels of PP2A alpha and PP2A beta.
Formulation	Liquid in PBS containing 50% glycerol, 0.5% BSA and 0.02% sodium azide.
Source	Monoclonal, Mouse
Purification	The antibody was affinity-purified from mouse ascites by affinity-chromatography using epitope-specific immunogen.
Dilution	wb 1:2000
Concentration	1 mg/ml
Purity	≥90%
Storage Stability	-20°C/1 year
Synonyms	PP2A beta;PP2A-beta;PP2AB_HUMAN;PP2Abeta;PP2CB;Ppp2cb;Protein phosphatase 2 (formerly 2A), catalytic subunit, beta isoform;Protein phosphatase 2 catalytic subunit beta isozyme;Protein phosphatase 2, catalytic subunit, beta isoform;Protein phosphatase 2A catalytic subunit beta isoform;Protein phosphatase type 2A catalytic subunit;Serine/threonine protein phosphatase 2A catalytic subunit beta;Serine/threonine-protein phosphatase 2A catalytic subunit beta isoform.
Observed Band	36kD
Cell Pathway	Cytoplasm . Nucleus . Chromosome, centromere . Cytoplasm, cytoskeleton, spindle pole . In prometaphase cells, but not in anaphase cells, localizes at centromeres. During mitosis, also found at spindle poles.
Tissue Specificity	Fibroblast,Heart,Kidney,Liver,
Function	catalytic activity:A phosphoprotein + H(2)O = a protein + phosphate.;cofactor:binds 1 iron ion per subunit.;cofactor:binds 1 manganese ion per subunit.;function:PP2A can modulate the activity of phosphorylase B kinase

Nanjing BYabscience technology Co.,Ltd



casein kinase 2, mitogen-stimulated S6 kinase, and MAP-2 kinase.,PTM:Phosphorylation of either threonine (by autophosphorylation-activated protein kinase) or tyrosine results in inactivation of the phosphatase. Auto-dephosphorylation has been suggested as a mechanism for reactivation.,PTM:Reversibly methyl esterified on Leu-309. Carboxyl methylation may play a role in holoenzyme assembly. It varies during the cell cycle. Demethylated by PME1 (in vitro).,similarity:Belongs to the PPP phosphatase family.,similarity:Belongs to the PPP phosphatase family. PP-1 subfamily.,subcellular location:In prometaphase cells, but not in anaphase cells, localizes at centromeres. During mito

Background

This gene encodes the phosphatase 2A catalytic subunit. Protein phosphatase 2A is one of the four major Ser/Thr phosphatases, and it is implicated in the negative control of cell growth and division. It consists of a common heteromeric core enzyme, which is composed of a catalytic subunit and a constant regulatory subunit, that associates with a variety of regulatory subunits. This gene encodes a beta isoform of the catalytic subunit. [provided by RefSeq, Mar 2010],

matters needing attention

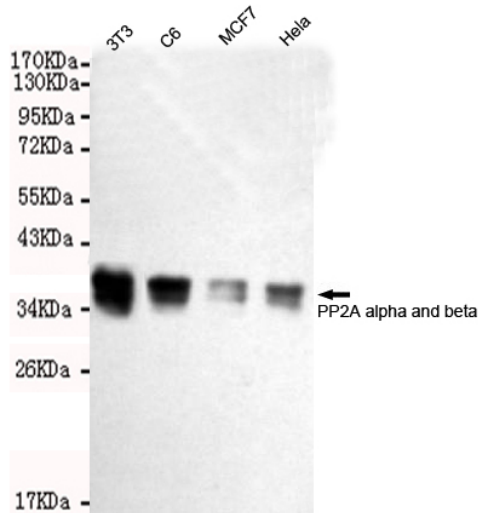
Avoid repeated freezing and thawing!

Usage suggestions

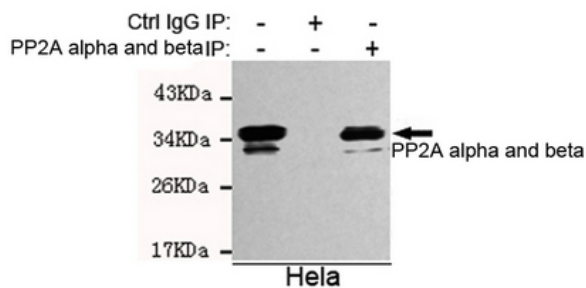
This product can be used in immunological reaction related experiments. For more information, please consult technical personnel.



Products Images



Western blot detection of PP2A alpha and beta in HeLa, MCF7, C6 and 3T3 cell lysates using PP2A alpha and beta mouse mAb (1:2000 diluted). Predicted band size: 36KDa. Observed band size: 36KDa.



Immunoprecipitation analysis of HeLa cell lysates using PP2A alpha and beta mouse mAb.