



Dkk-1 Polyclonal Antibody

Catalog No	BYab-04344
Isotype	IgG
Reactivity	Human;Mouse;Rat
Applications	WB;IHC;IF;ELISA
Gene Name	DKK1
Protein Name	Dickkopf-related protein 1
Immunogen	The antiserum was produced against synthesized peptide derived from the C-terminal region of human DKK1. AA range:181-230
Specificity	Dkk-1 Polyclonal Antibody detects endogenous levels of Dkk-1 protein.
Formulation	Liquid in PBS containing 50% glycerol, 0.5% BSA and 0.02% sodium azide.
Source	Polyclonal, Rabbit,IgG
Purification	The antibody was affinity-purified from rabbit antiserum by affinity-chromatography using epitope-specific immunogen.
Dilution	WB: 1/500 - 1/2000. IHC-p: 1:100-1:300. ELISA: 1/10000.. IF 1:50-200
Concentration	1 mg/ml
Purity	≥90%
Storage Stability	-20°C/1 year
Synonyms	DKK1; Dickkopf-related protein 1; Dickkopf-1; Dkk-1; hDkk-1; SK
Observed Band	29kD
Cell Pathway	Secreted.
Tissue Specificity	Placenta.
Function	function:Inhibitor of Wnt signaling pathway.,similarity:Belongs to the dickkopf family.,tissue specificity:Placenta.,
Background	This gene encodes a protein that is a member of the dickkopf family. It is a secreted protein with two cysteine rich regions and is involved in embryonic development through its inhibition of the WNT signaling pathway. Elevated levels of DKK1 in bone marrow plasma and peripheral blood is associated with the presence of osteolytic bone lesions in patients with multiple myeloma. [provided by RefSeq, Jul 2008],

Nanjing BYabscience technology Co.,Ltd



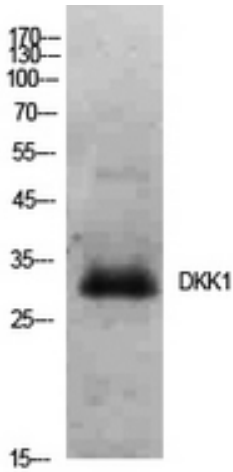
matters needing attention

Avoid repeated freezing and thawing!

Usage suggestions

This product can be used in immunological reaction related experiments. For more information, please consult technical personnel.

Products Images



Western Blot analysis of Hela cells using Dkk-1 Polyclonal Antibody. Secondary antibody(catalog#:RS0002) was diluted at 1:20000



Immunohistochemical analysis of paraffin-embedded human-brain, antibody was diluted at 1:100