



## 4.1G Polyclonal Antibody

<b>Catalog No</b>	BYab-03665
<b>Isotype</b>	IgG
<b>Reactivity</b>	Human;Rat;Mouse;
<b>Applications</b>	WB;IHC;IF;ELISA
<b>Gene Name</b>	EPB41L2
<b>Protein Name</b>	Band 4.1-like protein 2
<b>Immunogen</b>	Synthesized peptide derived from 4.1G . at AA range: 530-610
<b>Specificity</b>	4.1G Polyclonal Antibody detects endogenous levels of 4.1G protein.
<b>Formulation</b>	Liquid in PBS containing 50% glycerol, 0.5% BSA and 0.02% sodium azide.
<b>Source</b>	Polyclonal, Rabbit,IgG
<b>Purification</b>	The antibody was affinity-purified from rabbit antiserum by affinity-chromatography using epitope-specific immunogen.
<b>Dilution</b>	WB: 1/500 - 1/2000. IHC: 1/100 - 1/300. ELISA: 1/40000.. IF 1:50-200
<b>Concentration</b>	1 mg/ml
<b>Purity</b>	≥90%
<b>Storage Stability</b>	-20°C/1 year
<b>Synonyms</b>	EPB41L2; Band 4.1-like protein 2; Generally expressed protein 4.1; 4.1G
<b>Observed Band</b>	112kD
<b>Cell Pathway</b>	Cytoplasm, cytoskeleton . Cytoplasm, cell cortex . Cell membrane .
<b>Tissue Specificity</b>	Widely expressed.
<b>Function</b>	PTM:Phosphorylated upon DNA damage, probably by ATM or ATR.,similarity:Contains 1 FERM domain.,subunit:The CTD domain interacts with FKBP2 (By similarity). Interacts with FCGR1A.,tissue specificity:Widely expressed.,
<b>Background</b>	PTM:Phosphorylated upon DNA damage, probably by ATM or ATR.,similarity:Contains 1 FERM domain.,subunit:The CTD domain interacts with FKBP2 (By similarity). Interacts with FCGR1A.,tissue specificity:Widely expressed.,
<b>matters needing attention</b>	Avoid repeated freezing and thawing!

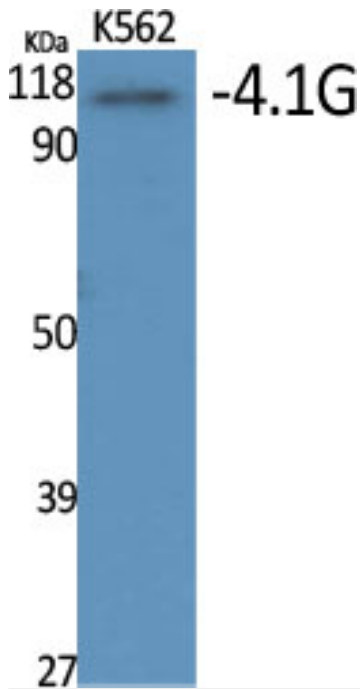
Nanjing BYabscience technology Co.,Ltd



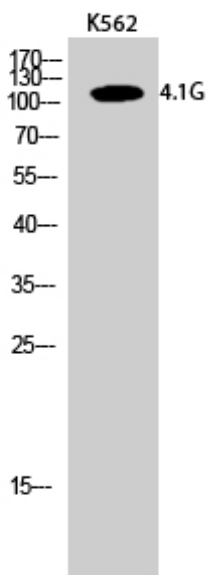
**Usage suggestions**

This product can be used in immunological reaction related experiments. For more information, please consult technical personnel.

**Products Images**

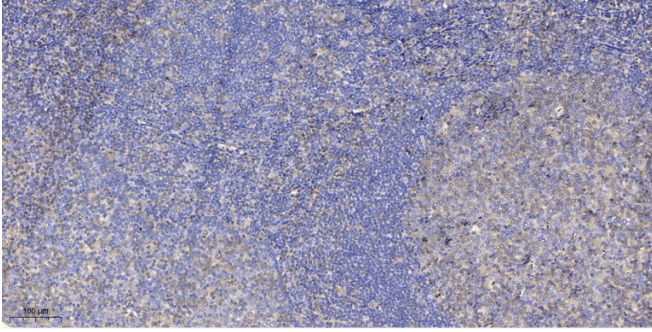


Western Blot analysis of various cells using 4.1G Polyclonal Antibody



Western Blot analysis of K562 cells using 4.1G Polyclonal Antibody

**Nanjing BYabscience technology Co.,Ltd**



Immunohistochemical analysis of paraffin-embedded human tonsil. 1, Antibody was diluted at 1:200(4° overnight). 2, Tris-EDTA,pH9.0 was used for antigen retrieval. 3,Secondary antibody was diluted at 1:200(room temperature, 30min).