



Cystatin C mouse Monoclonal Antibody(7F11)

Catalog No	BYab-03497
Isotype	IgG
Reactivity	Human
Applications	IF;WB;IHC;ELISA
Gene Name	CST3
Protein Name	CST3
Immunogen	Recombinant Protein of Cystatin C of CST3
Specificity	Cystatin C protein detects endogenous levels of CST3
Formulation	Liquid in PBS containing 50% glycerol, 0.5% BSA and 0.02% sodium azide.
Source	Monoclonal, Mouse
Purification	The antibody was affinity-purified from mouse ascites by affinity-chromatography using specific immunogen.
Dilution	IF: 1:50-200 WB 1:1000-2000, IHC 1:100-200
Concentration	1 mg/ml
Purity	≥90%
Storage Stability	-20°C/1 year
Synonyms	CST3
Observed Band	14kD
Cell Pathway	Secreted .
Tissue Specificity	Expressed in submandibular and sublingual saliva but not in parotid saliva (at protein level). Expressed in various body fluids, such as the cerebrospinal fluid and plasma. Expressed in highest levels in the epididymis, vas deferens, brain, thymus, and ovary and the lowest in the submandibular gland.
Function	disease:Defects in CST3 are the cause of amyloidosis type 6 (AMYL6) [MIM:105150]; also known as hereditary cerebral hemorrhage with amyloidosis (HCHWA), cerebral amyloid angiopathy (CAA) or cerebroarterial amyloidosis Icelandic type. AMYL6 is a hereditary generalized amyloidosis due to cystatin C amyloid deposition. Cystatin C amyloid accumulates in the walls of arteries, arterioles, and sometimes capillaries and veins of the brain, and in various organs including lymphoid tissue, spleen, salivary glands, and seminal vesicles. Amyloid deposition in the cerebral vessels results in cerebral amyloid angiopathy, cerebral hemorrhage and premature stroke. Cystatin C levels in the cerebrospinal fluid are abnormally low.,disease:Genetic variations in CST3 are associated with

Nanjing BYabscience technology Co.,Ltd



age-related macular degeneration type 11 (ARMD11) [MIM:611953]. ARMD is a multifactorial eye disease and the most common ca

Background

The cystatin superfamily encompasses proteins that contain multiple cystatin-like sequences. Some of the members are active cysteine protease inhibitors, while others have lost or perhaps never acquired this inhibitory activity. There are three inhibitory families in the superfamily, including the type 1 cystatins (stefins), type 2 cystatins and the kininogens. The type 2 cystatin proteins are a class of cysteine proteinase inhibitors found in a variety of human fluids and secretions, where they appear to provide protective functions. The cystatin locus on chromosome 20 contains the majority of the type 2 cystatin genes and pseudogenes. This gene is located in the cystatin locus and encodes the most abundant extracellular inhibitor of cysteine proteases, which is found in high concentrations in biological fluids and is expressed in virtually all organs of the body. A mutation in this gene has been associate

matters needing attention

Avoid repeated freezing and thawing!

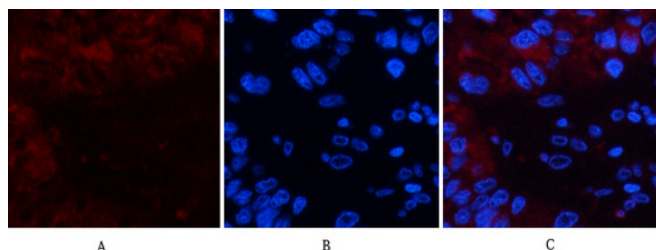
Usage suggestions

This product can be used in immunological reaction related experiments. For more information, please consult technical personnel.

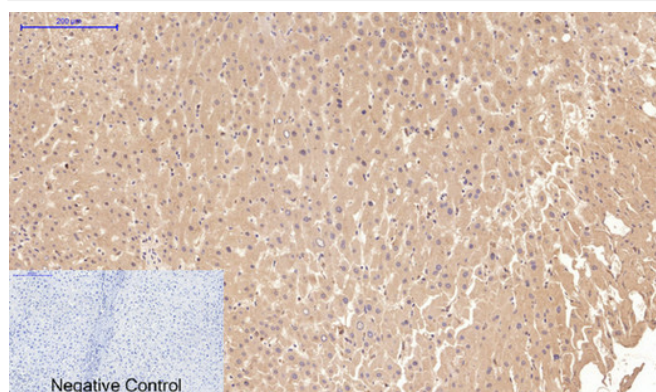
Nanjing BYabscience technology Co.,Ltd



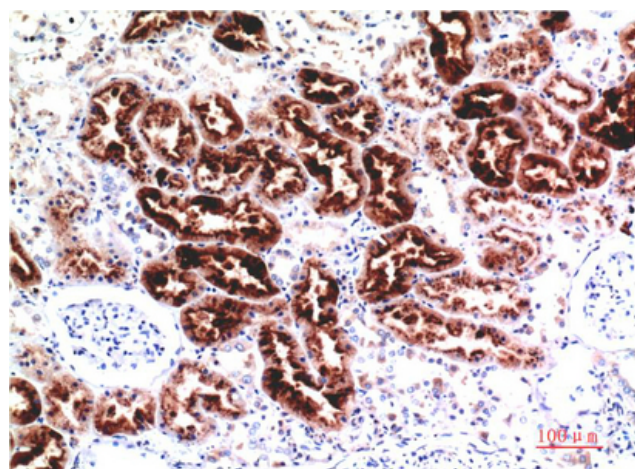
Products Images



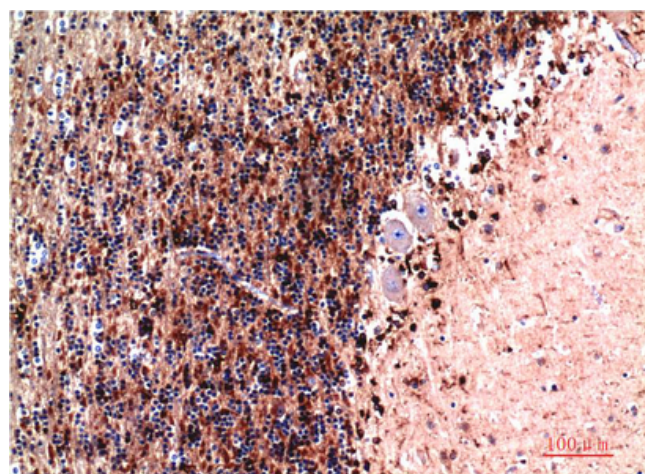
Immunofluorescence analysis of human-liver-cancer tissue. 1, Cystatin C Mouse Monoclonal Antibody(7F11)(red) was diluted at 1:200(4°C, overnight). 2, Cy3 labeled Secondary antibody was diluted at 1:300(room temperature, 50min). 3, Picture B: DAPI(blue) 10min. Picture A: Target. Picture B: DAPI. Picture C: merge of A+B



Immunohistochemical analysis of paraffin-embedded Human-liver tissue. 1, Cystatin C Mouse Monoclonal Antibody(7F11) was diluted at 1:200(4°C, overnight). 2, Sodium citrate pH 6.0 was used for antibody retrieval(>98°C, 20min). 3, Secondary antibody was diluted at 1:200(room temperature, 30min). Negative control was used by secondary antibody only.

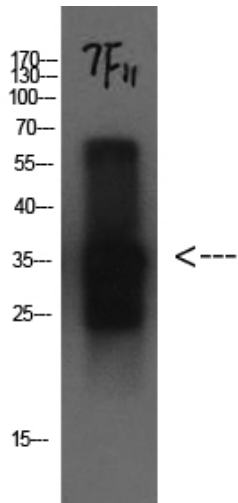


Immunohistochemical analysis of paraffin-embedded Human Kidney Tissue using Cystatin C Mouse mAb diluted at 1:200



Immunohistochemical analysis of paraffin-embedded Human Brain Tissue using Cystatin C Mouse mAb diluted at 1:200.

Nanjing BYabs science technology Co.,Ltd



Western Blot analysis of Cystatin C protein using antibody diluted at 1:1000