



Cyclophilin B Monoclonal Antibody(2B10)

Catalog No	BYab-03494
Isotype	IgG
Reactivity	Human;Rat;Mouse
Applications	IF;WB;IHC;
Gene Name	PPIB
Protein Name	Peptidyl-prolyl cis-trans isomerase B (PPlase B) (EC 5.2.1.8) (CYP-S1) (Cyclophilin B) (Rotamase B) (S-cyclophilin) (SCYLP)
Immunogen	Synthetic Peptide of Cyclophilin B
Specificity	Cyclophilin B protein detects endogenous levels of Cyclophilin B
Formulation	Liquid in PBS containing 50% glycerol, 0.5% BSA and 0.02% sodium azide.
Source	Monoclonal, Mouse
Purification	The antibody was affinity-purified from mouse ascites by affinity-chromatography using specific immunogen.
Dilution	IF: 1:50-200 WB 1:1000-2000 IHC 1:50-300
Concentration	1 mg/ml
Purity	≥90%
Storage Stability	-20°C/1 year
Synonyms	PPIB; CYPB; Peptidyl-prolyl cis-trans isomerase B; PPlase B; CYP-S1; Cyclophilin B; Rotamase B; S-cyclophilin; SCYLP
Observed Band	21kD
Cell Pathway	Virion . (Microbial infection).; Endoplasmic reticulum lumen . Melanosome . Identified by mass spectrometry in melanosome fractions from stage I to stage IV (PubMed:17081065). .
Tissue Specificity	Brain,Fetal brain cortex,Prostate,Skin,
Function	catalytic activity:Peptidylproline (omega=180) = peptidylproline (omega=0).,caution:It is uncertain whether Met-1 or Met-9 is the initiator.,enzyme regulation:Cyclosporin A (CsA) inhibits CYPB.,function:PPlases accelerate the folding of proteins. It catalyzes the cis-trans isomerization of proline imidic peptide bonds in oligopeptides.,similarity:Belongs to the cyclophilin-type PPlase family. PPlase B subfamily.,similarity:Contains 1 PPlase cyclophilin-type domain.,subcellular location:Identified by mass spectrometry in melanosome fractions from stage I to stage IV.,

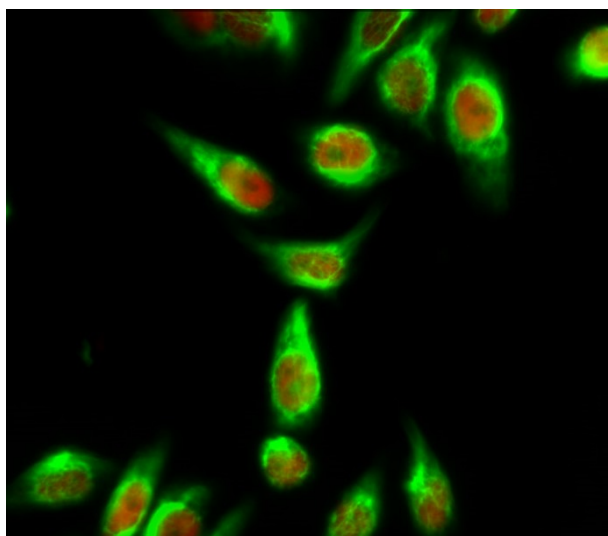
Nanjing BYabscience technology Co.,Ltd



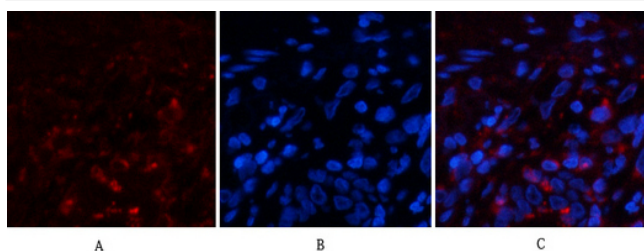
Background	The protein encoded by this gene is a cyclosporine-binding protein and is mainly located within the endoplasmic reticulum. It is associated with the secretory pathway and released in biological fluids. This protein can bind to cells derived from T- and B-lymphocytes, and may regulate cyclosporine A-mediated immunosuppression. Variants have been identified in this protein that give rise to recessive forms of osteogenesis imperfecta. [provided by RefSeq, Oct 2009],
matters needing attention	Avoid repeated freezing and thawing!
Usage suggestions	This product can be used in immunological reaction related experiments. For more information, please consult technical personnel.



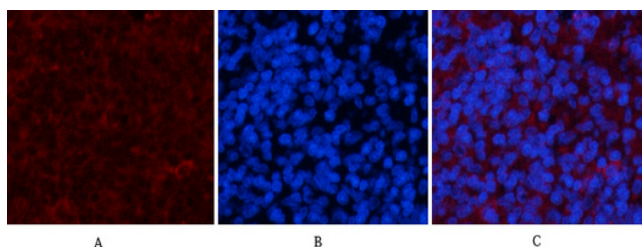
Products Images



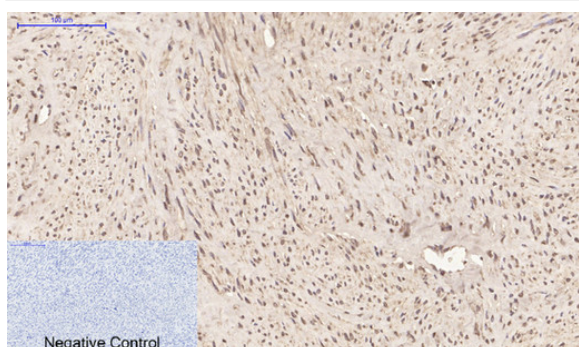
Immunofluorescence analysis of HeLa cell.
1, Calmodulin Polyclonal Antibody (green) was diluted at 1:200 (4° overnight). (red) was diluted at 1:200 (4° overnight). 2, Goat Anti Rabbit Alexa Fluor 488 Catalog: RS3211 was diluted at 1:1000 (room temperature, 50min). Goat Anti Mouse Alexa Fluor 594 Catalog: RS3608 was diluted at 1:1000 (room temperature, 50min).



Immunofluorescence analysis of human-lung tissue.
1, Cyclophilin B Monoclonal Antibody (2B10) (red) was diluted at 1:200 (4°C, overnight). 2, Cy3 labeled Secondary antibody was diluted at 1:300 (room temperature, 50min). 3, Picture B: DAPI (blue) 10min. Picture A: Target. Picture B: DAPI. Picture C: merge of A+B

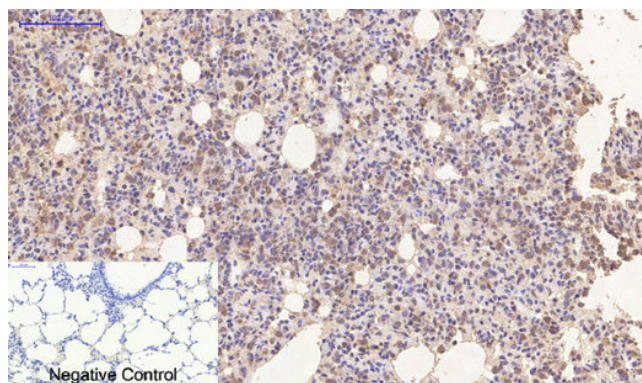


Immunofluorescence analysis of rat-spleen tissue.
1, Cyclophilin B Monoclonal Antibody (2B10) (red) was diluted at 1:200 (4°C, overnight). 2, Cy3 labeled Secondary antibody was diluted at 1:300 (room temperature, 50min). 3, Picture B: DAPI (blue) 10min. Picture A: Target. Picture B: DAPI. Picture C: merge of A+B



Immunohistochemical analysis of paraffin-embedded Human-uterus tissue. 1, Cyclophilin B Monoclonal Antibody (2B10) was diluted at 1:200 (4°C, overnight). 2, Sodium citrate pH 6.0 was used for antibody retrieval (>98°C, 20min). 3, Secondary antibody was diluted at 1:200 (room temperature, 30min). Negative control was used by secondary antibody only.

Nanjing BYabs science technology Co., Ltd



Immunohistochemical analysis of paraffin-embedded Rat-lung tissue. 1,Cyclophilin B Monoclonal Antibody(2B10) was diluted at 1:200(4°C,overnight). 2, Sodium citrate pH 6.0 was used for antibody retrieval(>98°C,20min). 3,Secondary antibody was diluted at 1:200(room tempeRature, 30min). Negative control was used by secondary antibody only.