



GRAP2 mouse mAb

Catalog No	BYab-03478
Isotype	IgG
Reactivity	Human
Applications	WB
Gene Name	grap2
Protein Name	
Immunogen	Recombinant protein of human GRAP2.
Specificity	This antibody detects endogenous levels of GRAP2 and does not cross-react with related proteins.
Formulation	Liquid in PBS containing 50% glycerol, 0.5% BSA and 0.02% sodium azide.
Source	Monoclonal, Mouse
Purification	The antibody was affinity-purified from mouse ascites by affinity-chromatography using epitope-specific immunogen.
Dilution	wb dilution 1:1000
Concentration	1 mg/ml
Purity	≥90%
Storage Stability	-20°C/1 year
Synonyms	Adapter protein GRID; GADS; GADS protein; GRAP-2; Grap2; GRAP2_HUMAN; GRB-2-like protein; GRB2-related adaptor protein 2; GRB2-related adaptor protein 2; GRB2-related protein with insert domain; GRB2L; GRBLG; GRBX; Grf-40; Grf40 adaptor protein; Grf40; GRID; Growth factor receptor-binding protein; Growth factor receptor-bound protein 2-related adaptor protein 2; GRPL; Hema; Hematopoietic cell-associated adaptor protein GrpL; Hematopoietic cell-associated adaptor protein GRPL; Mona; p38; Protein GADS; SH3-SH2-SH3 adaptor Mona; SH3-SH2-SH3 adaptor molecule.
Observed Band	38kD
Cell Pathway	Nucleus . Cytoplasm . Endosome .
Tissue Specificity	Blood,Lung,Platelet,Spleen,T-cell,Thymus,
Function	function:Interacts with SLP-76 to regulate NF-AT activation. Binds to tyrosine-phosphorylated shc.,similarity:Belongs to the GRB2/sem-5/DRK

Nanjing BYabscience technology Co.,Ltd



family.,similarity:Contains 1 SH2 domain.,similarity:Contains 2 SH3 domains.,subunit:Interacts with phosphorylated LIME1 upon TCR activation (By similarity). Interacts with phosphorylated LAT and LAX1 upon TCR activation. Interacts with SHB.,

Background

This gene encodes a member of the GRB2/Sem5/Drk family. This member is an adaptor-like protein involved in leukocyte-specific protein-tyrosine kinase signaling. Like its related family member, GRB2-related adaptor protein (GRAP), this protein contains an SH2 domain flanked by two SH3 domains. This protein interacts with other proteins, such as GRB2-associated binding protein 1 (GAB1) and the SLP-76 leukocyte protein (LCP2), through its SH3 domains. Multiple alternatively spliced transcript variants encoding distinct isoforms have been found for this gene. [provided by RefSeq, Apr 2014],

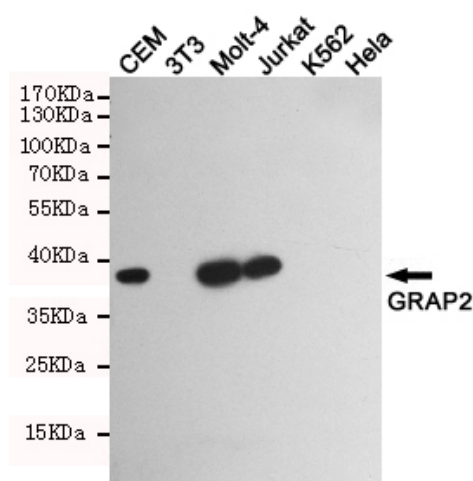
matters needing attention

Avoid repeated freezing and thawing!

Usage suggestions

This product can be used in immunological reaction related experiments. For more information, please consult technical personnel.

Products Images



Western blot detection of GRAP2 in GRAP2 positive cell (CEM,Molt-4,Jurkat) and negative cell (3T3,K562,Hela) lysates using GRAP2 mouse mAb (1:1000 diluted).Predicted band size:38KDa.Observed band size:38KDa.