



Rictor Monoclonal Antibody

Catalog No	BYab-03420
Isotype	IgG
Reactivity	Human;Mouse;Monkey
Applications	WB;IHC;IF;FCM;ELISA
Gene Name	RICTOR
Protein Name	Rapamycin-insensitive companion of mTOR
Immunogen	Purified recombinant fragment of human Rictor expressed in E. Coli.
Specificity	Rictor Monoclonal Antibody detects endogenous levels of Rictor protein.
Formulation	Ascitic fluid containing 0.03% sodium azide,0.5% BSA, 50%glycerol.
Source	Monoclonal, Mouse
Purification	Affinity purification
Dilution	Western Blot: 1/500 - 1/2000. Immunohistochemistry: 1/200 - 1/1000. Immunofluorescence: 1/200 - 1/1000. Flow cytometry: 1/200 - 1/400. ELISA: 1/10000. Not yet tested in other applications.
Concentration	1 mg/ml
Purity	≥90%
Storage Stability	-20°C/1 year
Synonyms	RICTOR; KIAA1999; Rapamycin-insensitive companion of mTOR; AVO3 homolog; hAVO3
Observed Band	
Cell Pathway	cytosol,TORC2 complex,
Tissue Specificity	Amygdala,Brain,Epithelium,Lymph,
Function	function:Plays an essential role in embryonic growth and development (By similarity). Part of the TORC2 complex which plays a critical role in AKT1 'Ser-473' phosphorylation, and may modulate the phosphorylation of PKCA and regulate actin cytoskeleton organization.,similarity:Belongs to the pianissimo family.,subunit:Forms part of the target of rapamycin 2 complex (TORC2) comprised of FRAP1, LST8, PROTOR1, RICTOR and MAPKAP1. TORC2 does not bind to and is not sensitive to FKBP12-rapamycin. Binds directly to FRAP1 and PROTOR1 within the TORC2 complex. May interact with PROTOR2.,
Background	RICTOR and MTOR (FRAP1; MIM 601231) are components of a protein complex that integrates nutrient- and growth factor-derived signals to regulate cell

Nanjing BYabscience technology Co.,Ltd



growth (Sarbasov et al., 2004 [PubMed 15268862]).[supplied by OMIM, Mar 2008],

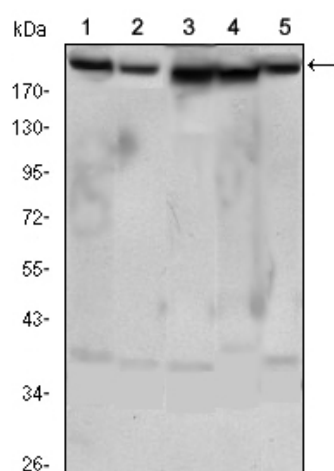
matters needing attention

Avoid repeated freezing and thawing!

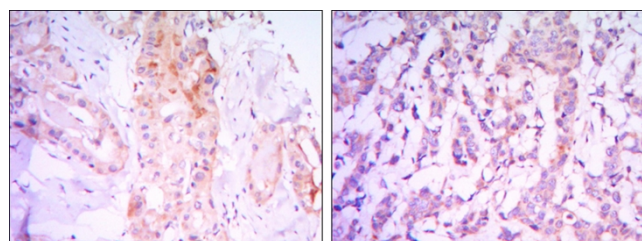
Usage suggestions

This product can be used in immunological reaction related experiments. For more information, please consult technical personnel.

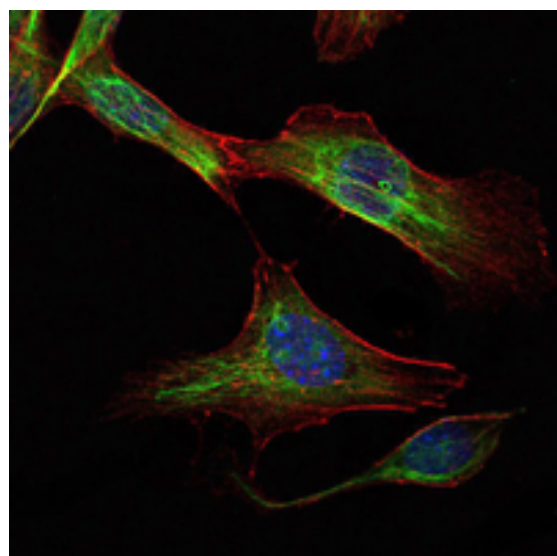
Products Images



Western Blot analysis using Rictor Monoclonal Antibody against HeLa (1), PANC-1 (2), MOLT4 (3), HepG2 (4) and HEK293 (5) cell lysate.

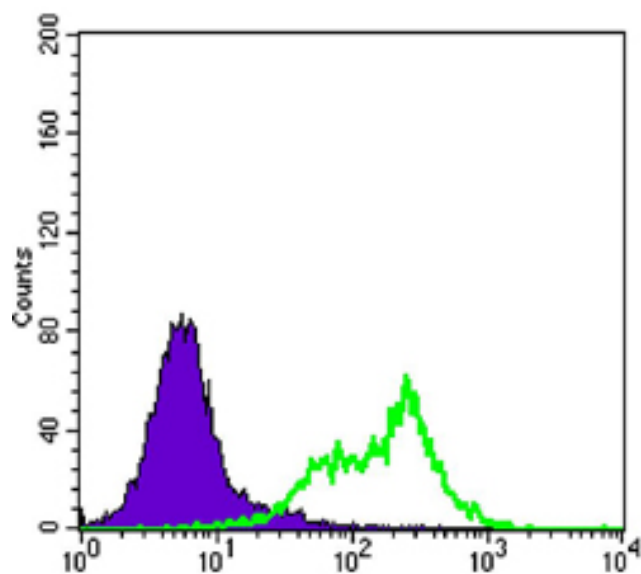


Immunohistochemistry analysis of paraffin-embedded thyroid gland tissues (left) and human breast carcinoma (right) with DAB staining using Rictor Monoclonal Antibody.



Immunofluorescence analysis of NIH/3T3 cells using Rictor Monoclonal Antibody (green). Blue: DRAQ5 fluorescent DNA dye. Red: Actin filaments have been labeled with Alexa Fluor-555 phalloidin.

Nanjing BYabs science technology Co.,Ltd



Flow cytometric analysis of Hela cells using Rictor Monoclonal Antibody (green) and negative control (purple).