



Ribosomal Protein S27 Monoclonal Antibody

| | |
|---------------------------|--|
| Catalog No | BYab-03418 |
| Isotype | IgG |
| Reactivity | Human |
| Applications | IHC;IF;ELISA |
| Gene Name | RPS27 |
| Protein Name | 40S ribosomal protein S27 |
| Immunogen | Purified recombinant fragment of Ribosomal Protein S27 expressed in E. Coli. |
| Specificity | Ribosomal Protein S27 Monoclonal Antibody detects endogenous levels of Ribosomal Protein S27 protein. |
| Formulation | Ascitic fluid containing 0.03% sodium azide,0.5% BSA, 50%glycerol. |
| Source | Monoclonal, Mouse |
| Purification | Affinity purification |
| Dilution | IHC: 1/200 - 1/1000. ELISA: 1/10000.. IF 1:50-200 |
| Concentration | 1 mg/ml |
| Purity | ≥90% |
| Storage Stability | -20°C/1 year |
| Synonyms | RPS27; MPS1; 40S ribosomal protein S27; Metallopan-stimulin 1; MPS-1 |
| Observed Band | |
| Cell Pathway | nucleus,nucleoplasm,cytosol,ribosome,cytosolic small ribosomal subunit, |
| Tissue Specificity | Expressed in a wide variety of actively proliferating cells and tumor tissues. |
| Function | caution:Was originally (PubMed:8407955) thought to be a protein that could have played a role as a potentially important mediator of cellular proliferative responses to various growth factors and other environmental signals. Capable of specific binding to a cAMP response element in DNA.,cofactor:Binds 1 zinc ion per subunit .,cofactor:Binds 1 zinc ion per subunit.,similarity:Belongs to the ribosomal protein S27e family.,tissue specificity:Expressed in a wide variety of actively proliferating cells and tumor tissues., |
| Background | Ribosomes, the organelles that catalyze protein synthesis, consist of a small 40S subunit and a large 60S subunit. Together these subunits are composed of 4 RNA species and approximately 80 structurally distinct proteins. This gene encodes a ribosomal protein that is a component of the 40S subunit. The protein belongs to the S27E family of ribosomal proteins. It contains a C4-type zinc finger domain |

Nanjing BYabscience technology Co.,Ltd



that can bind to zinc. The encoded protein has been shown to be able to bind to nucleic acid. It is located in the cytoplasm as a ribosomal component, but it has also been detected in the nucleus. Studies in rat indicate that ribosomal protein S27 is located near ribosomal protein S18 in the 40S subunit and is covalently linked to translation initiation factor eIF3. As is typical for genes encoding ribosomal proteins, there are multiple processed pseudogenes of this gene dispersed through the genome. [pr

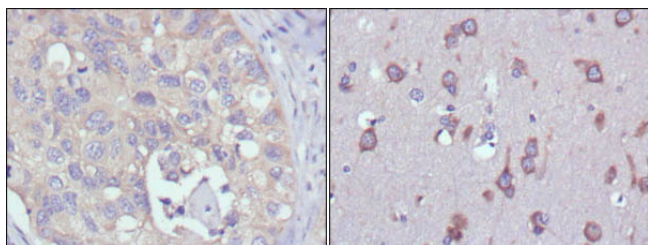
matters needing attention

Avoid repeated freezing and thawing!

Usage suggestions

This product can be used in immunological reaction related experiments. For more information, please consult technical personnel.

Products Images



Immunohistochemistry analysis of paraffin-embedded human lung cancer (left) and human brain (right) tissues with DAB staining using Ribosomal Protein S27 Monoclonal Antibody.