



PSA Monoclonal Antibody

Catalog No	BYab-03416
Isotype	IgG
Reactivity	Human
Applications	WB;IHC;IF;FCM;ELISA
Gene Name	KLK3
Protein Name	Prostate-specific antigen
Immunogen	Purified recombinant fragment of PSA (aa26-251) expressed in E. Coli.
Specificity	PSA Monoclonal Antibody detects endogenous levels of PSA protein.
Formulation	Ascitic fluid containing 0.03% sodium azide,0.5% BSA, 50%glycerol.
Source	Monoclonal, Mouse
Purification	Affinity purification
Dilution	WB: 1/500 - 1/2000. IHC: 1/200 - 1/1000. Flow cytometry: 1/200 - 1/400. ELISA: 1/10000.. IF 1:50-200
Concentration	1 mg/ml
Purity	≥90%
Storage Stability	-20°C/1 year
Synonyms	KLK3; APS; Prostate-specific antigen; PSA; Gamma-seminoprotein; Semin; Kallikrein-3; P-30 antigen; Semenogelase
Observed Band	
Cell Pathway	Secreted.
Tissue Specificity	Leukocyte,PNS,Prostate,
Function	catalytic activity:Preferential cleavage: -Tyr- -Xaa-.,function:Hydrolyzes semenogelin-1 thus leading to the liquefaction of the seminal coagulum.,online information:Prostate-specific antigen entry,similarity:Belongs to the peptidase S1 family.,similarity:Belongs to the peptidase S1 family. Kallikrein subfamily.,similarity:Contains 1 peptidase S1 domain.,
Background	Kallikreins are a subgroup of serine proteases having diverse physiological functions. Growing evidence suggests that many kallikreins are implicated in carcinogenesis and some have potential as novel cancer and other disease biomarkers. This gene is one of the fifteen kallikrein subfamily members located in a cluster on chromosome 19. Its protein product is a protease present in seminal plasma. It is thought to function normally in the liquefaction of seminal coagulum,

Nanjing BYabs science technology Co.,Ltd



presumably by hydrolysis of the high molecular mass seminal vesicle protein. Serum level of this protein, called PSA in the clinical setting, is useful in the diagnosis and monitoring of prostatic carcinoma. Alternate splicing of this gene generates several transcript variants encoding different isoforms. [provided by RefSeq, Jul 2008],

matters needing attention

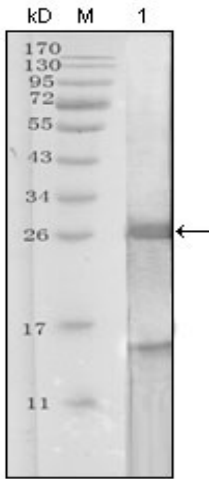
Avoid repeated freezing and thawing!

Usage suggestions

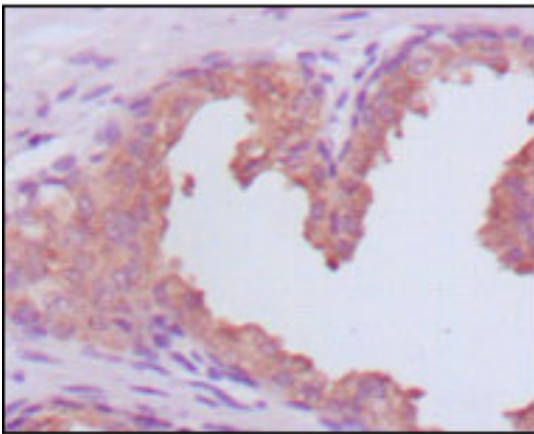
This product can be used in immunological reaction related experiments. For more information, please consult technical personnel.



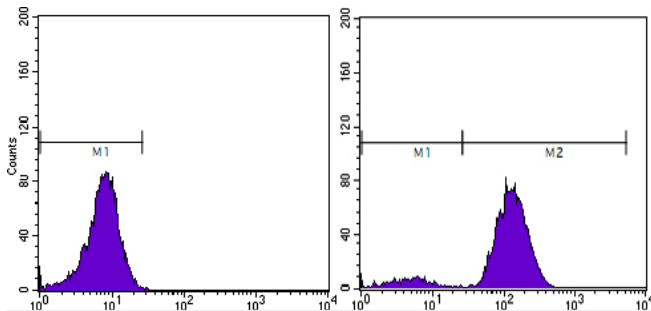
Products Images



Western Blot analysis using PSA Monoclonal Antibody against truncated PSA recombinant protein.



Immunohistochemistry analysis of paraffin-embedded human prostate carcinoma tissues, showing cytoplasmic localization with DAB staining using PSA Monoclonal Antibody.



Flow cytometric analysis of PC-3 cells using PSA Monoclonal Antibody (right) and negative control (left).