



# IRE1α Monoclonal Antibody

Catalog No	BYab-03409
Isotype	IgG
Reactivity	Human
Applications	WB;IHC;IF;ELISA
Gene Name	ERN1
Protein Name	Serine/threonine-protein kinase/endoribonuclease IRE1
Immunogen	Purified recombinant fragment of human IRE1α (aa282-433) expressed in E. Coli.
Specificity	IRE1α Monoclonal Antibody detects endogenous levels of IRE1α protein.
Formulation	Ascitic fluid containing 0.03% sodium azide,0.5% BSA, 50%glycerol.
Source	Monoclonal, Mouse
Purification	Affinity purification
Dilution	WB: 1/500 - 1/2000. IHC: 1/200 - 1/1000. ELISA: 1/10000.. IF 1:50-200
Concentration	1 mg/ml
Purity	≥90%
Storage Stability	-20°C/1 year
Synonyms	ERN1; IRE1; Serine/threonine-protein kinase/endoribonuclease IRE1; Endoplasmic reticulum-to-nucleus signaling 1; Inositol-requiring protein 1; hIRE1p; Ire1-alpha; IRE1a
Observed Band	
Cell Pathway	Endoplasmic reticulum membrane ; Single-pass type I membrane protein .
Tissue Specificity	Ubiquitously expressed. High levels observed in pancreatic tissue.
Function	catalytic activity:ATP + a protein = ADP + a phosphoprotein.,cofactor:Magnesium.,enzyme regulation:The kinase domain is activated by trans-autophosphorylation. Kinase activity is required for activation of the endoribonuclease domain.,function:Senses unfolded proteins in the lumen of the endoplasmic reticulum via its N-terminal domain which leads to enzyme auto-activation. The active endoribonuclease domain splices XBP1 mRNA to generate a new C-terminus, converting it into a potent unfolded-protein response transcriptional activator and triggering growth arrest and apoptosis.,PTM:Autophosphorylated.,similarity:Belongs to the protein kinase superfamily. Ser/Thr protein kinase family.,similarity:Contains 1 KEN

Nanjing BYabscience technology Co.,Ltd



domain.,similarity:Contains 1 protein kinase domain.,subunit:Homodimer; disulfide-linked. Dimer formation is driven by hydrophobic interactions within the N-terminal luminal domains

## Background

The protein encoded by this gene is the ER to nucleus signalling 1 protein, a human homologue of the yeast Ire1 gene product. This protein possesses intrinsic kinase activity and an endoribonuclease activity and it is important in altering gene expression as a response to endoplasmic reticulum-based stress signals. [provided by RefSeq, Jul 2008],

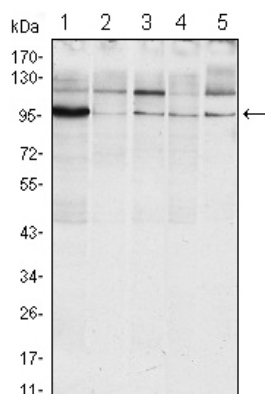
## matters needing attention

Avoid repeated freezing and thawing!

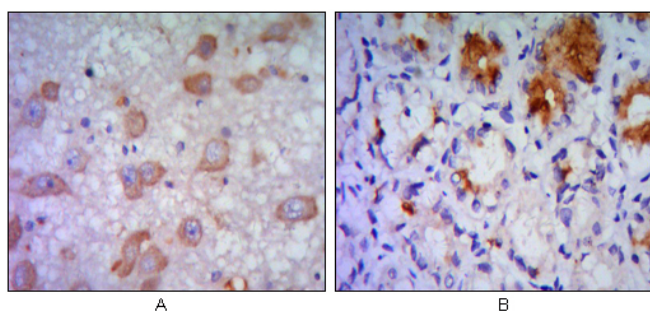
## Usage suggestions

This product can be used in immunological reaction related experiments. For more information, please consult technical personnel.

## Products Images



Western Blot analysis using IRE1α Monoclonal Antibody against Raji (1), A431 (2), Jurkat (3), HeLa(4) and HEK293 (5) cell lysate.



Immunohistochemistry analysis of paraffin-embedded human brain tissue (A) and stomach tissue (B), showing cytoplasmic localization with DAB staining using IRE1α Monoclonal Antibody.

Nanjing BYabs science technology Co.,Ltd

网址: [www.njbybio.com](http://www.njbybio.com)

官方热线: 025-5229-8998

监督电话: 15950492658