



ANP32A Monoclonal Antibody

Catalog No	BYab-03383
Isotype	IgG
Reactivity	Human
Applications	WB;IHC;IF;ELISA
Gene Name	ANP32A
Protein Name	Acidic leucine-rich nuclear phosphoprotein 32 family member A
Immunogen	Purified recombinant fragment of human ANP32A expressed in E. Coli.
Specificity	ANP32A Monoclonal Antibody detects endogenous levels of ANP32A protein.
Formulation	Ascitic fluid containing 0.03% sodium azide,0.5% BSA, 50%glycerol.
Source	Monoclonal, Mouse
Purification	Affinity purification
Dilution	WB: 1/500 - 1/2000. IHC: 1/200 - 1/1000. ELISA: 1/10000.. IF 1:50-200
Concentration	1 mg/ml
Purity	≥90%
Storage Stability	-20°C/1 year
Synonyms	ANP32A; C15orf1; LANP; MAPM; PHAP1; Acidic leucine-rich nuclear phosphoprotein 32 family member A; Acidic nuclear phosphoprotein pp32; Leucine-rich acidic nuclear protein; LANP; Mapmodulin; Potent heat-stable protein phosphatase 2A inhibito
Observed Band	
Cell Pathway	Nucleus . Cytoplasm . Endoplasmic reticulum. Translocates to the cytoplasm during the process of neuritogenesis (By similarity). Shuttles between nucleus and cytoplasm. .
Tissue Specificity	Expressed in all tissues tested. Highly expressed in kidney and skeletal muscle, moderate levels of expression in brain, placenta and pancreas, and weakly expressed in lung. Found in all regions of the brain examined (amygdala, caudate nucleus, corpus callosum, hippocampus and thalamus), with highest levels in amygdala.
Function	function:Implicated in a number of cellular processes, including proliferation, differentiation, caspase-dependent and caspase-independent apoptosis, suppression of transformation (tumor suppressor), inhibition of protein phosphatase 2A, regulation of mRNA trafficking and stability in association with ELAVL1, and inhibition of acetyltransferases as part of the INHAT (inhibitor of

Nanjing BYabs science technology Co.,Ltd



	histone acetyltransferases) complex. Plays a role in E4F1-mediated transcriptional repression.,PTM:Phosphorylated on serine residues.,PTM:The N-terminus is blocked.,similarity:Belongs to the ANP32 family.,similarity:Contains 4 LRR (leucine-rich) repeats.,subcellular location:Shuttles between nucleus and cytoplasm.,subunit:Component of the SET complex, which also contains SET, APEX1, HMGB2 and NME1. Directly interacts with SET. Interacts with ATXN1/SCA1. Interacts with MAP1B (By similarity). Interacts with ELAVL1
Background	function:Implicated in a number of cellular processes, including proliferation, differentiation, caspase-dependent and caspase-independent apoptosis, suppression of transformation (tumor suppressor), inhibition of protein phosphatase 2A, regulation of mRNA trafficking and stability in association with ELAVL1, and inhibition of acetyltransferases as part of the INHAT (inhibitor of histone acetyltransferases) complex. Plays a role in E4F1-mediated transcriptional repression.,PTM:Phosphorylated on serine residues.,PTM:The N-terminus is blocked.,similarity:Belongs to the ANP32 family.,similarity:Contains 4 LRR (leucine-rich) repeats.,subcellular location:Shuttles between nucleus and cytoplasm.,subunit:Component of the SET complex, which also contains SET, APEX1, HMGB2 and NME1. Directly interacts with SET. Interacts with ATXN1/SCA1. Interacts with MAP1B (By similarity). Interacts with ELAVL1. Part of the INHAT (inhibitor of histone acetyltransferases) complex. Interacts with E4F1.,tissue specificity:Expressed in all tissues tested. Highly expressed in kidney and skeletal muscle, moderate levels of expression in brain, placenta and pancreas, and weakly expressed in lung. Found in all regions of the brain examined (amygdala, caudate nucleus, corpus callosum, hippocampus and thalamus), with highest levels in amygdala.,
matters needing attention	Avoid repeated freezing and thawing!
Usage suggestions	This product can be used in immunological reaction related experiments. For more information, please consult technical personnel.

Nanjing BYabscience technology Co.,Ltd

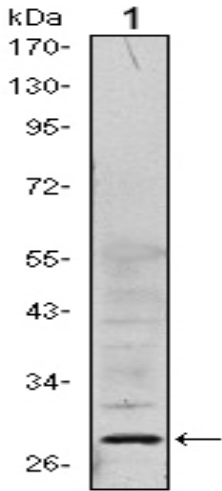
网址: www.njbybio.com

官方热线: 025-5229-8998

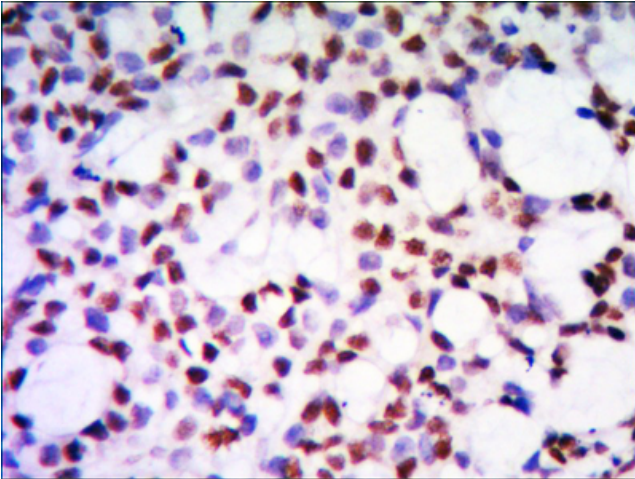
监督电话: 15950492658



Products Images



Western Blot analysis using ANP32A Monoclonal Antibody against HeLa (1) cell lysate.



Immunohistochemistry analysis of paraffin-embedded human kidney tissue with DAB staining using ANP32A Monoclonal Antibody.

Nanjing BYabs science technology Co.,Ltd

网址: www.njbybio.com

官方热线: 025-5229-8998

监督电话: 15950492658