



# Cleaved-Factor XII HC (R372) Polyclonal Antibody

<b>Catalog No</b>	BYab-03352
<b>Isotype</b>	IgG
<b>Reactivity</b>	Human;Rat;Mouse;
<b>Applications</b>	WB;ELISA
<b>Gene Name</b>	F12
<b>Protein Name</b>	Coagulation factor XII
<b>Immunogen</b>	The antiserum was produced against synthesized peptide derived from human FA12. AA range:323-372
<b>Specificity</b>	Cleaved-Factor XII HC (R372) Polyclonal Antibody detects endogenous levels of fragment of activated Factor XII HC protein resulting from cleavage adjacent to R372.
<b>Formulation</b>	Liquid in PBS containing 50% glycerol, 0.5% BSA and 0.02% sodium azide.
<b>Source</b>	Polyclonal, Rabbit,IgG
<b>Purification</b>	The antibody was affinity-purified from rabbit antiserum by affinity-chromatography using epitope-specific immunogen.
<b>Dilution</b>	Western Blot: 1/500 - 1/2000. ELISA: 1/20000. Not yet tested in other applications.
<b>Concentration</b>	1 mg/ml
<b>Purity</b>	≥90%
<b>Storage Stability</b>	-20°C/1 year
<b>Synonyms</b>	F12; Coagulation factor XII; Hageman factor; HAF
<b>Observed Band</b>	41kD
<b>Cell Pathway</b>	Secreted.
<b>Tissue Specificity</b>	Blood,Lung,Plasma,
<b>Function</b>	catalytic activity:Selective cleavage of Arg- -Ile bonds in factor VII to form factor VIIa and factor XI to form factor XIa.,disease:Defects in F12 are the cause of factor XII deficiency (FA12D) [MIM:234000]; also known as Hageman factor deficiency. This trait is an asymptomatic anomaly of in vitro blood coagulation. Its diagnosis is based on finding a low plasma activity of the factor in coagulating assays. It is usually only accidentally discovered through pre-operative blood tests. F12 deficiency is divided into two categories, a cross-reacting material (CRM)-negative group (negative F12 antigen detection) and a CRM-positive group (positive F12 antigen detection).,disease:Defects in F12 are the cause of hereditary angioedema type 3 (HAE3) [MIM:610618]; also known as

Nanjing BYabscience technology Co.,Ltd



estrogen-related HAE or hereditary angioneurotic edema with normal C1 inhibitor concentration and function. HAE is chara

**Background**

This gene encodes coagulation factor XII which circulates in blood as a zymogen. This single chain zymogen is converted to a two-chain serine protease with an heavy chain (alpha-factor XIIa) and a light chain. The heavy chain contains two fibronectin-type domains, two epidermal growth factor (EGF)-like domains, a kringle domain and a proline-rich domain, whereas the light chain contains only a catalytic domain. On activation, further cleavages takes place in the heavy chain, resulting in the production of beta-factor XIIa light chain and the alpha-factor XIIa light chain becomes beta-factor XIIa heavy chain. Prekallikrein is cleaved by factor XII to form kallikrein, which then cleaves factor XII first to alpha-factor XIIa and then to beta-factor XIIa. The active factor XIIa participates in the initiation of blood coagulation, fibrinolysis, and the generation of bradykinin and angiotensin. It activat

**matters needing attention**

Avoid repeated freezing and thawing!

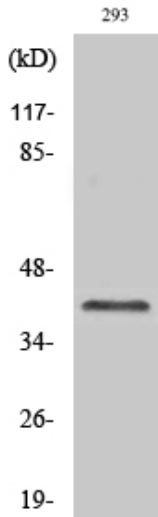
**Usage suggestions**

This product can be used in immunological reaction related experiments. For more information, please consult technical personnel.

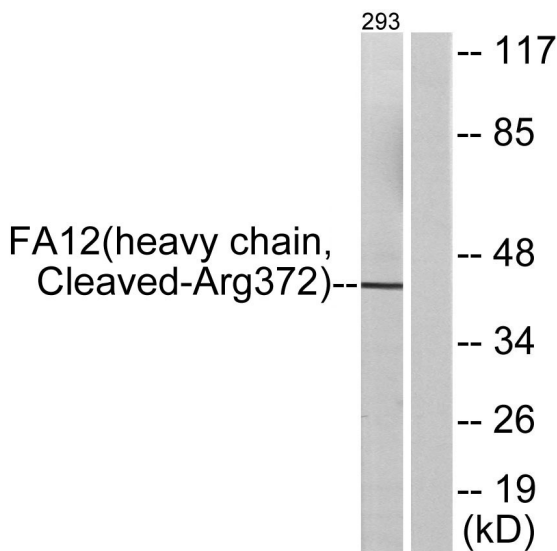
Nanjing BYabscience technology Co.,Ltd



## Products Images



Western Blot analysis of various cells using  
Cleaved-Factor XII HC (R372) Polyclonal Antibody



Western blot analysis of lysates from 293 cells, treated  
with etoposide 25uM 1h, using FA12 (heavy  
chain,Cleaved-Arg372) Antibody. The lane on the right  
is blocked with the synthesized peptide.