



TBL1Y Monoclonal Antibody

Catalog No	BYab-03264
Isotype	IgG
Reactivity	Human;Mouse;Rat;Dog;Pig
Applications	WB
Gene Name	TBL1Y
Protein Name	F-box-like/WD repeat-containing protein TBL1Y
Immunogen	Purified recombinant human TBL1Y protein fragments expressed in E.coli.
Specificity	TBL1Y Monoclonal Antibody detects endogenous levels of TBL1Y protein.
Formulation	Purified mouse monoclonal in buffer containing 0.1M Tris-Glycine (pH 7.4, 150 mM NaCl) with 0.2% sodium azide, 50% glycerol.
Source	Monoclonal, Mouse
Purification	Affinity purification
Dilution	Western Blot: 1/1000 - 1/2000. Not yet tested in other applications.
Concentration	1 mg/ml
Purity	≥90%
Storage Stability	-20°C/1 year
Synonyms	TBL1Y; TBL1; F-box-like/WD repeat-containing protein TBL1Y; Transducin beta-like protein 1Y; Transducin-beta-like protein 1; Y-linked
Observed Band	
Cell Pathway	Nucleus .
Tissue Specificity	Fetal brain and prostate. Expressed in the cochlear spiral ganglion neurons, and in outer and inner hair cells (PubMed:30341416).
Function	domain:The F-box-like domain is related to the F-box domain, and apparently displays the same function as component of ubiquitin E3 ligase complexes.,function:F-box-like protein involved in the recruitment of the ubiquitin/19S proteasome complex to nuclear receptor-regulated transcription units. Plays an essential role in transcription activation mediated by nuclear receptors. Probably acts as integral component of corepressor complexes that mediates the recruitment of the 19S proteasome complex, leading to the subsequent proteosomal degradation of transcription repressor complexes, thereby allowing cofactor exchange.,similarity:Belongs to the WD repeat EBI family.,similarity:Contains 1 F-box-like domain.,similarity:Contains 1 LisH domain.,similarity:Contains 8 WD repeats.,subunit:Probable component of the

Nanjing BYabscience technology Co.,Ltd



N-Cor repressor complex and some E3 ubiquitin ligase complex.,tissue specificity:F

Background

transducin beta like 1, Y-linked(TBL1Y) Homo sapiens The protein encoded by this gene has sequence similarity with members of the WD40 repeat-containing protein family. The WD40 group is a large family of proteins, which appear to have a regulatory function. It is believed that the WD40 repeats mediate protein-protein interactions and members of the family are involved in signal transduction, RNA processing, gene regulation, vesicular trafficking, cytoskeletal assembly and may play a role in the control of cytotypic differentiation. This gene is highly similar to TBL1X gene in nucleotide sequence and protein sequence, but the TBL1X gene is located on chromosome X and this gene is on chromosome Y. This gene has three alternatively spliced transcript variants encoding the same protein. [provided by RefSeq, Jul 2008],

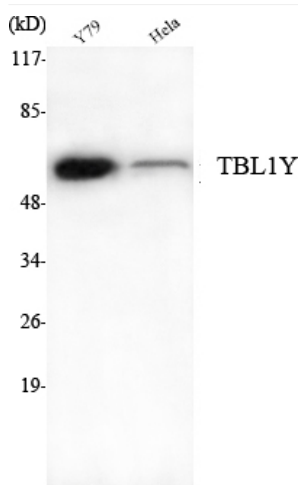
matters needing attention

Avoid repeated freezing and thawing!

Usage suggestions

This product can be used in immunological reaction related experiments. For more information, please consult technical personnel.

Products Images



Western Blot analysis using TBL1Y Monoclonal Antibody against Y79, HeLa cell lysate.