



Gamma Tubulin mouse Monoclonal Antibody(4A4)

Catalog No	BYab-02993
Isotype	IgG
Reactivity	Human
Applications	IF;IHC
Gene Name	TUBG1
Protein Name	TUBG1
Immunogen	Synthetic Peptide of Gamma Tubulin
Specificity	Gamma Tubulin protein detects endogenous levels of TUBG1
Formulation	Liquid in PBS containing 50% glycerol, 0.5% BSA and 0.02% sodium azide.
Source	Monoclonal, Mouse
Purification	The antibody was affinity-purified from mouse ascites by affinity-chromatography using specific immunogen.
Dilution	IF: 1:50-200 WB 500-2000 1:100-200
Concentration	1 mg/ml
Purity	≥90%
Storage Stability	-20°C/1 year
Synonyms	TUBG1
Observed Band	50kD
Cell Pathway	Cytoplasm, cytoskeleton, microtubule organizing center, centrosome . Cytoplasm, cytoskeleton, spindle . Localizes to mitotic spindle microtubules. .
Tissue Specificity	Mammary cancer,Skin,
Function	function:Tubulin is the major constituent of microtubules. Gamma tubulin is found at microtubule organizing centers (MTOC) such as the spindle poles or the centrosome, suggesting that it is involved in the minus-end nucleation of microtubule assembly.,mass spectrometry: PubMed:11840567,similarity:Belongs to the tubulin family.,subunit:Interacts with GCP2 and GCP3. Interacts with B9D2.,
Background	This gene encodes a member of the tubulin superfamily. The encoded protein localizes to the centrosome where it binds to microtubules as part of a complex referred to as the gamma-tubulin ring complex. The protein mediates microtubule nucleation and is required for microtubule formation and progression of the cell cycle. A pseudogene of this gene is found on chromosome 7. [provided by RefSeq, Jan 2009],

Nanjing BYabscience technology Co.,Ltd



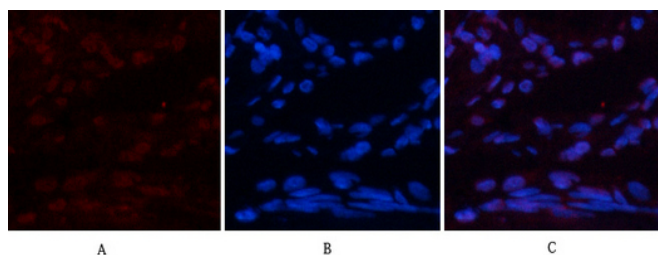
matters needing attention

Avoid repeated freezing and thawing!

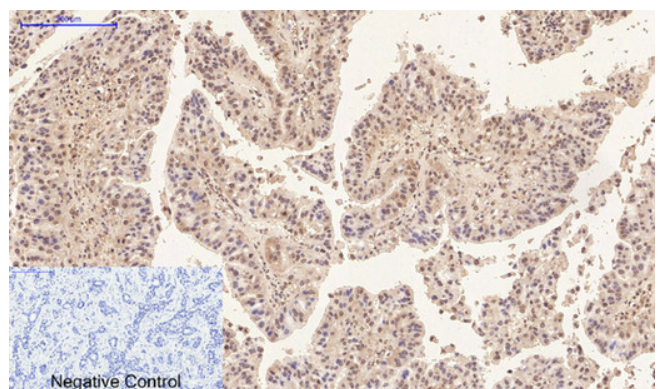
Usage suggestions

This product can be used in immunological reaction related experiments. For more information, please consult technical personnel.

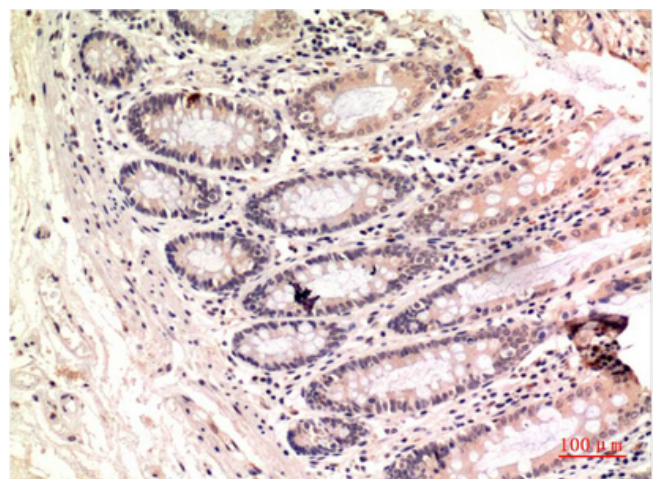
Products Images



Immunofluorescence analysis of human-lung tissue. 1, Gamma Tubulin Mouse Monoclonal Antibody(4A4)(red) was diluted at 1:200(4°C, overnight). 2, Cy3 labeled Secondary antibody was diluted at 1:300(room temperature, 50min). 3, Picture B: DAPI(blue) 10min. Picture A: Target. Picture B: DAPI. Picture C: merge of A+B



Immunohistochemical analysis of paraffin-embedded Human-liver-cancer tissue. 1, Gamma Tubulin Mouse Monoclonal Antibody(4A4) was diluted at 1:200(4°C, overnight). 2, Sodium citrate pH 6.0 was used for antibody retrieval(>98°C, 20min). 3, Secondary antibody was diluted at 1:200(room temperature, 30min). Negative control was used by secondary antibody only.



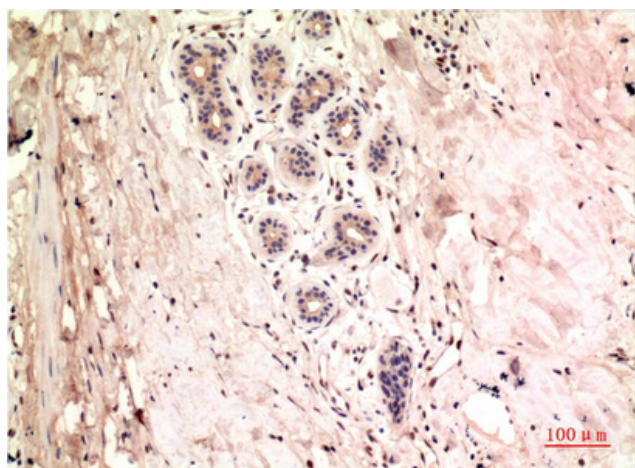
Immunohistochemical analysis of paraffin-embedded Human Colon Carcinoma Tissue using gamma Tubulin Mouse mAb diluted at 1:200.

Nanjing BYabscience technology Co.,Ltd

网址: www.njbybio.com

官方热线: 025-5229-8998

监督电话: 15950492658



Immunohistochemical analysis of paraffin-embedded Human Breast Carcinoma Tissue using gamma Tubulin Mouse mAb diluted at 1:200.