



β I tubulin Monoclonal Antibody(3F7)

Catalog No	BYab-02970
Isotype	IgG
Reactivity	Human;Rat;Mouse
Applications	WB;IHC;IF;
Gene Name	TUBB1
Protein Name	Tubulin beta-1 chain
Immunogen	Synthetic Peptide of β I tubulin
Specificity	The antibody detects endogenousβ I tubulin proteins.
Formulation	PBS, pH 7.4, containing 0.5%BSA, 0.02% sodium azide as Preservative and 50% Glycerol.
Source	Monoclonal, Mouse
Purification	The antibody was affinity-purified from mouse ascites by affinity-chromatography using specific immunogen.
Dilution	WB: 1:500-10000 IF 1:200 IHC 1:50-300
Concentration	1 mg/ml
Purity	≥90%
Storage Stability	-20°C/1 year
Synonyms	TUBB1; Tubulin beta-1 chain; TUBB2A; TUBB2; Tubulin beta-2A chain; TUBB2B; Tubulin beta-2B chain; TUBB4B; TUBB2C; Tubulin beta-4B chain; Tubulin beta-2 chain; Tubulin beta-2C chain; TUBB3; TUBB4; Tubulin beta-3 chain; Tubulin beta-4 chain; Tubulin beta-III; TUBB4A; TUBB4; TUBB5; Tubulin beta-4A chain; Tubulin 5 beta; Tubulin beta-4 chain; TUBB; TUBB5; OK/SW-cl.56; Tubulin beta chain; Tubulin beta-5 chain; TUBB6; Tubulin beta-6 chain; TUBB8; Tubulin beta-8 chain
Observed Band	50kD
Cell Pathway	Cytoplasm, cytoskeleton .
Tissue Specificity	Hematopoietic cell-specific. Major isotype in leukocytes, where it represents 50% of all beta-tubulins.
Function	function:Tubulin is the major constituent of microtubules. It binds two moles of GTP, one at an exchangeable site on the beta chain and one at a non-exchangeable site on the alpha-chain.,similarity:Belongs to the tubulin

Nanjing BYabscience technology Co.,Ltd



family.,subunit:Dimer of alpha and beta chains.,

Background

This gene encodes a member of the beta tubulin protein family. Beta tubulins are one of two core protein families (alpha and beta tubulins) that heterodimerize and assemble to form microtubules. This protein is specifically expressed in platelets and megakaryocytes and may be involved in proplatelet production and platelet release. A mutations in this gene is associated with autosomal dominant macrothrombocytopenia. Two pseudogenes of this gene are found on chromosome Y.[provided by RefSeq, Jul 2010],

matters needing attention

Avoid repeated freezing and thawing!

Usage suggestions

This product can be used in immunological reaction related experiments. For more information, please consult technical personnel.

Nanjing BYabscience technology Co.,Ltd

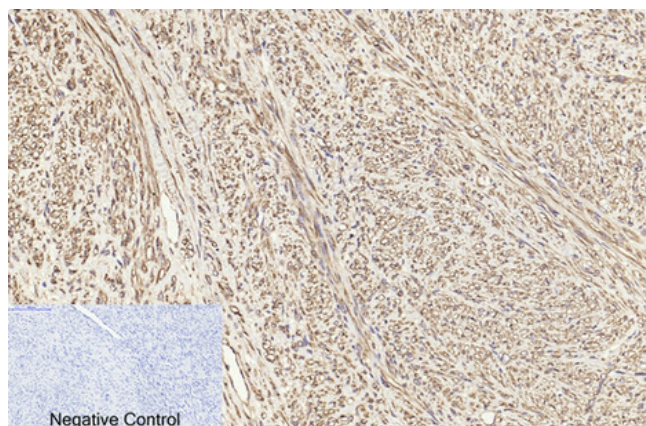
网址: www.njbybio.com

官方热线: 025-5229-8998

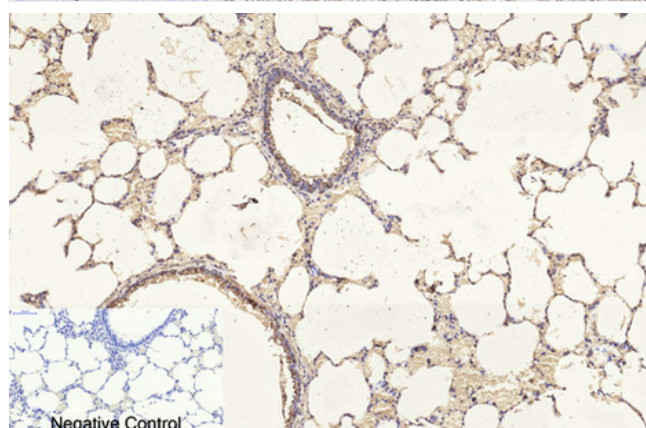
监督电话: 15950492658



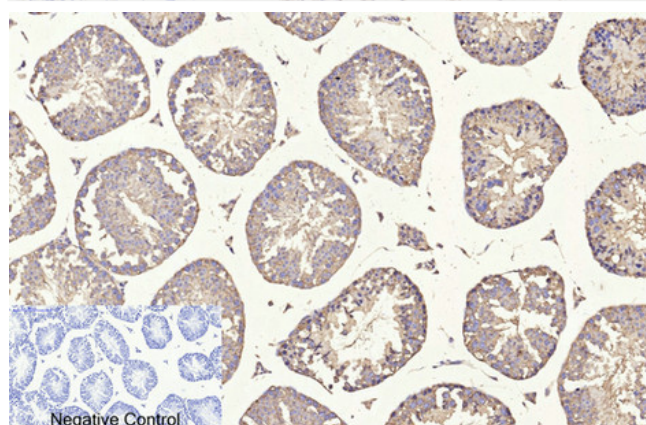
Products Images



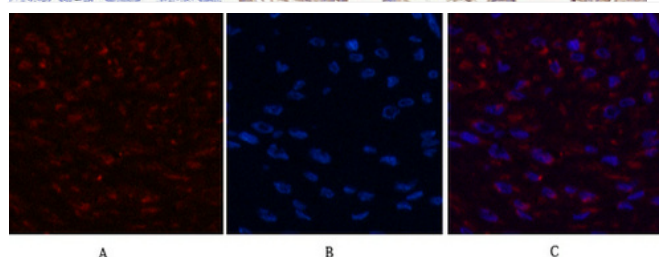
Immunohistochemical analysis of paraffin-embedded Human-uterus-cancer tissue. 1, β I tubulin Monoclonal Antibody(3F7) was diluted at 1:200(4°C, overnight). 2, Sodium citrate pH 6.0 was used for antibody retrieval(>98°C, 20min). 3, Secondary antibody was diluted at 1:200(room temperature, 30min). Negative control was used by secondary antibody only.



Immunohistochemical analysis of paraffin-embedded Rat-lung tissue. 1, β I tubulin Monoclonal Antibody(3F7) was diluted at 1:200(4°C, overnight). 2, Sodium citrate pH 6.0 was used for antibody retrieval(>98°C, 20min). 3, Secondary antibody was diluted at 1:200(room temperature, 30min). Negative control was used by secondary antibody only.



Immunohistochemical analysis of paraffin-embedded Mouse-testis tissue. 1, β I tubulin Monoclonal Antibody(3F7) was diluted at 1:200(4°C, overnight). 2, Sodium citrate pH 6.0 was used for antibody retrieval(>98°C, 20min). 3, Secondary antibody was diluted at 1:200(room temperature, 30min). Negative control was used by secondary antibody only.



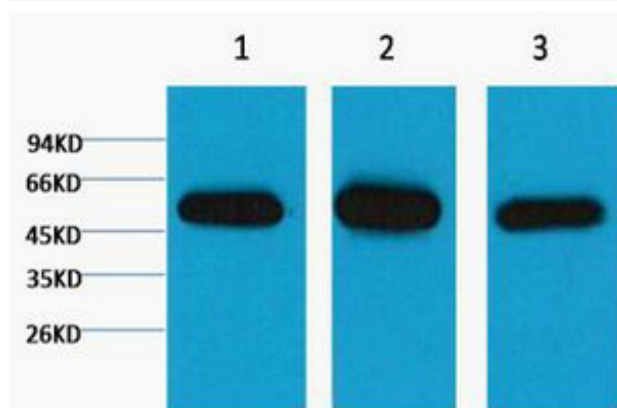
Immunofluorescence analysis of Human-breast-cancer tissue. 1, β I tubulin Monoclonal Antibody(3F7)(red) was diluted at 1:200(4°C, overnight). 2, Cy3 labeled Secondary antibody was diluted at 1:300(room temperature, 50min). 3, Picture B: DAPI(blue) 10min. Picture A: Target. Picture B: DAPI. Picture C: merge of A+B

Nanjing BYabscience technology Co.,Ltd

网址: www.njbybio.com

官方热线: 025-5229-8998

监督电话: 15950492658



Western blot analysis of 1) Hela, 2) Mouse Brain Tissue, 3) Rat Brain Tissue, diluted at 1:5000.