



# Human Serum Albumin mouse mAb

Catalog No	BYab-02960
Isotype	IgG
Reactivity	Human
Applications	WB;ELISA
Gene Name	alb
Protein Name	
Immunogen	Purified Human serum albumin.
Specificity	This antibody detects endogenous levels of Serum Albumin and does not cross-react with related proteins.
Formulation	Liquid in PBS containing 50% glycerol, 0.5% BSA and 0.02% sodium azide.
Source	Monoclonal, Mouse
Purification	The antibody was affinity-purified from mouse ascites by affinity-chromatography using epitope-specific immunogen.
Dilution	wb 1:2000
Concentration	1 mg/ml
Purity	≥90%
Storage Stability	-20°C/1 year
Synonyms	ALB;ALBU_HUMAN;Albumin (32 AA);Albumin (AA 34);Albumin;Analbuminemia;Bisalbuminemia;Cell growth inhibiting protein 42;DKFZp779N1935;Dysalbuminemic hyperthyroxinemia;Growth inhibiting protein 20;HSA;Hyperthyroxinemia dysalbuminemic;PRO0883;PRO0903;PRO1341;PRO2044;PRO2619;Serum albumin.
Observed Band	67kD
Cell Pathway	Secreted.
Tissue Specificity	Plasma.
Function	caution:A peptide arising from positions 166 to 174 was originally (PubMed:3087352 and PubMed:2437111) termed neurotensin-related peptide (NRP) or kinetensin and was thought to regulates fat digestion, lipid absorption, and blood flow.,disease:A variant structure of albumin could lead to increased binding of zinc resulting in an asymptomatic augmentation of zinc concentration in

Nanjing BYabscience technology Co.,Ltd



the blood [MIM:194470].,disease:Defects in ALB are a cause of familial dysalbuminemic hyperthyroxinemia (FDH) [MIM:103600]. FDH is a form of euthyroid hyperthyroxinemia that is due to increased affinity of ALB for T(4). It is the most common cause of inherited euthyroid hyperthyroxinemia in Caucasian population.,function:Serum albumin, the main protein of plasma, has a good binding capacity for water, Ca(2+), Na(+), K(+), fatty acids, hormones, bilirubin and drugs. Its main function is the regulation of the collo

**Background**

This gene encodes the most abundant protein in human blood. This protein functions in the regulation of blood plasma colloid osmotic pressure and acts as a carrier protein for a wide range of endogenous molecules including hormones, fatty acids, and metabolites, as well as exogenous drugs. Additionally, this protein exhibits an esterase-like activity with broad substrate specificity. The encoded preproprotein is proteolytically processed to generate the mature protein. A peptide derived from this protein, EPI-X4, is an endogenous inhibitor of the CXCR4 chemokine receptor. [provided by RefSeq, Jul 2016],

**matters needing attention**

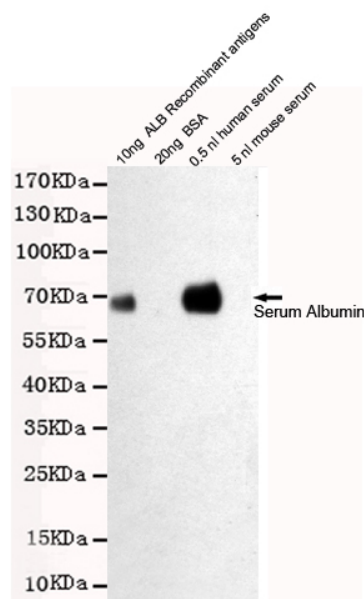
Avoid repeated freezing and thawing!

**Usage suggestions**

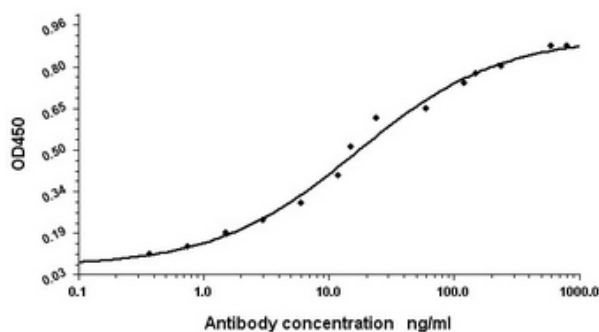
This product can be used in immunological reaction related experiments. For more information, please consult technical personnel.



## Products Images



Western blot detection of Human Serum Albumin in 0.5nl human serum and 10ng ALB Recombinant antigens cell lysates using Human Serum Albumin mouse mAb (1:2000 diluted). Predicted band size: 67KDa. Observed band size: 67KDa.



Indirect ELISA assay for anti-Human Serum Albumin mouse mAb. Antigen coating concentration: 8ug/ml.

Nanjing BYabs science technology Co.,Ltd

网址: [www.njbybio.com](http://www.njbybio.com)

官方热线: 025-5229-8998

监督电话: 15950492658