



Human Serum Albumin mouse mAb

Catalog No	BYab-02959
Isotype	IgG
Reactivity	Human
Applications	WB;ELISA;sELISA
Gene Name	alb
Protein Name	
Immunogen	Purified Human serum albumin.
Specificity	This antibody detects endogenous levels of Serum Albumin and does not cross-react with related proteins.
Formulation	Liquid in PBS containing 50% glycerol, 0.5% BSA and 0.02% sodium azide.
Source	Monoclonal, Mouse
Purification	The antibody was affinity-purified from mouse ascites by affinity-chromatography using epitope-specific immunogen.
Dilution	wb 1:1000
Concentration	1 mg/ml
Purity	≥90%
Storage Stability	-20°C/1 year
Synonyms	ALB;ALBU_HUMAN;Albumin (32 AA);Albumin (AA 34);Albumin;Analbuminemia;Bisalbuminemia;Cell growth inhibiting protein 42;DKFZp779N1935;Dysalbuminemic hyperthyroxinemia;Growth inhibiting protein 20;HSA;Hyperthyroxinemia dysalbuminemic;PRO0883;PRO0903;PRO1341; PRO2044;PRO2619;Serum albumin.
Observed Band	67kD
Cell Pathway	Secreted.
Tissue Specificity	Plasma.
Function	caution:A peptide arising from positions 166 to 174 was originally (PubMed:3087352 and PubMed:2437111) termed neurotensin-related peptide (NRP) or kinetensin and was thought to regulates fat digestion, lipid absorption, and blood flow.,disease:A variant structure of albumin could lead to increased binding of zinc resulting in an asymptomatic augmentation of zinc concentration in

Nanjing BYabscience technology Co.,Ltd



the blood [MIM:194470].,disease:Defects in ALB are a cause of familial dysalbuminemic hyperthyroxinemia (FDH) [MIM:103600]. FDH is a form of euthyroid hyperthyroxinemia that is due to increased affinity of ALB for T(4). It is the most common cause of inherited euthyroid hyperthyroxinemia in Caucasian population.,function:Serum albumin, the main protein of plasma, has a good binding capacity for water, Ca(2+), Na(+), K(+), fatty acids, hormones, bilirubin and drugs. Its main function is the regulation of the collo

Background

This gene encodes the most abundant protein in human blood. This protein functions in the regulation of blood plasma colloid osmotic pressure and acts as a carrier protein for a wide range of endogenous molecules including hormones, fatty acids, and metabolites, as well as exogenous drugs. Additionally, this protein exhibits an esterase-like activity with broad substrate specificity. The encoded preproprotein is proteolytically processed to generate the mature protein. A peptide derived from this protein, EPI-X4, is an endogenous inhibitor of the CXCR4 chemokine receptor. [provided by RefSeq, Jul 2016],

matters needing attention

Avoid repeated freezing and thawing!

Usage suggestions

This product can be used in immunological reaction related experiments. For more information, please consult technical personnel.

Nanjing BYabscience technology Co.,Ltd

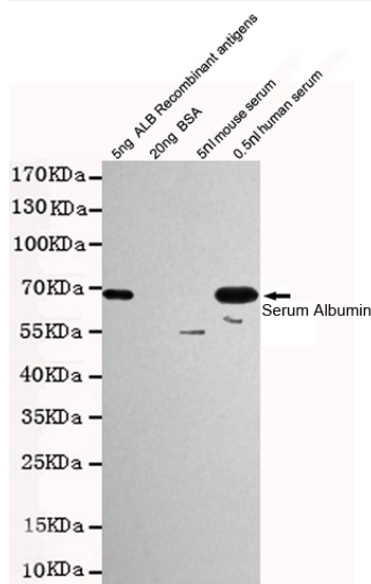
网址: www.njbybio.com

官方热线: 025-5229-8998

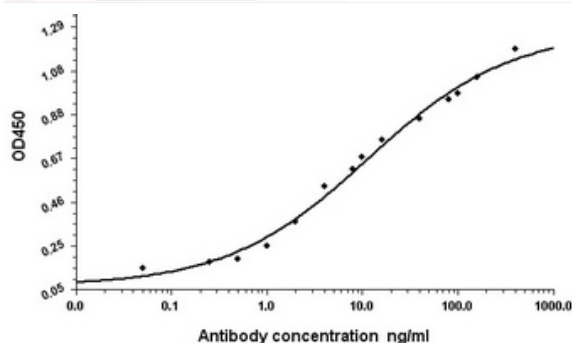
监督电话: 15950492658



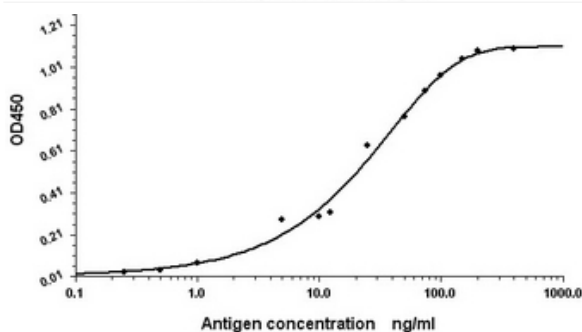
Products Images



Western blot detection of Human Serum Albumin in 0.5nl human serum and 5ng ALB Recombinant antigens cell lysates using Human Serum Albumin mouse mAb (1:1000 diluted). Predicted band size: 67KDa. Observed band size: 67KDa.



Indirect ELISA assay for anti-Human Serum Albumin mouse mAb. Antigen coating concentration: 8ug/ml.



Standard Curve for Human Serum Albumin (Analyte: Human Serum Albumin protein); using Capture Antibody Mouse monoclonal [1A8-C5-B4] to Human Serum Albumin at 8μg/ml and Detector Antibody Rabbit polyclonal antiserum to Human Serum Albumin.

Nanjing BYabs science technology Co.,Ltd

网址: www.njbybio.com

官方热线: 025-5229-8998

监督电话: 15950492658